

BAY FINN (BAIE FINE) ONTARIO

McGregor Bay 4 mi.; Browning Cove 8 mi.; Little Current 14 mi.; Killarney 18 mi.

N.C. 83	1949
Canadian Chart	2286
Lat.	46° 1' N
Long.	80° 41' W
Mag.Var.	7° 15' W 1940
Decreasing	1' annually
Population	Few cottagers
Aids to Navigation	None

Bay Finn, about 8 miles long and very narrow, is a picturesque bay enclosed between two arms of the Ontario mainland, the north one of which is the ridge of high rocky hills composing McGregor Bay Point and separating McGregor Bay and Bay Finn. Bay Finn waters are annually visited by many seasoned cruising men and should by all means be seen when in this general area. These waters open off the north shore of Frazer Bay.

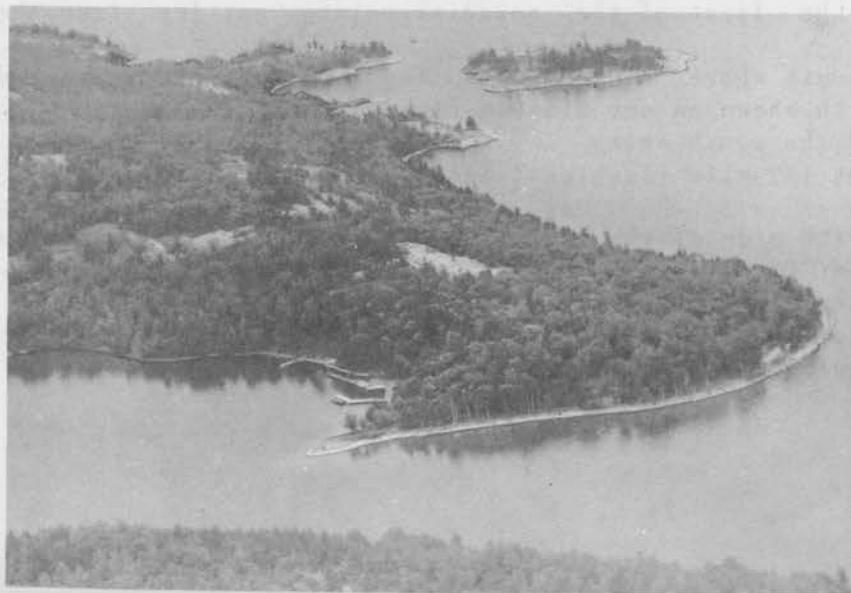
CAUTION: Bay Finn has not been surveyed. Only the south half of Frazer Bay has been surveyed. Only a few of the reefs and isolated rocks in these two bays are known and recorded. Proceed with caution even on recommended courses. The maps available are not navigation charts, i.e., they are not exact.

SPECIAL NOTE: Observe the islands about 1 mile SW of the entrance to Bay Finn. In this report we shall call these the Finn Islands.

APPROACHING BAY FINN FROM THE SOUTH: (1) Sail northerly up Frazer Bay in surveyed waters to a spot where you can take and hold the west tip of McGregor Bay Point 008° True dead ahead. This means starting up Frazer Bay over at the west side near Mary Point on Little Cloche Island. Caution: Observe rocks on east shore Little Cloche. (2) When Entrance to Bay Finn opens up off the starboard bow so that the long outer part of Bay Finn is visible, head for the entrance. Sometimes it is hard to know you are looking up the long, outer part of the bay but the course line runs from about the cove midway on east side of Little Cloche Island to the north of the Finn Islands. This is a course of about 068° True. Favor the Finn Islands. (3) Continue on about the same course going from the Finn Islands directly for the entrance to Bay Finn about 3/4 mile away.

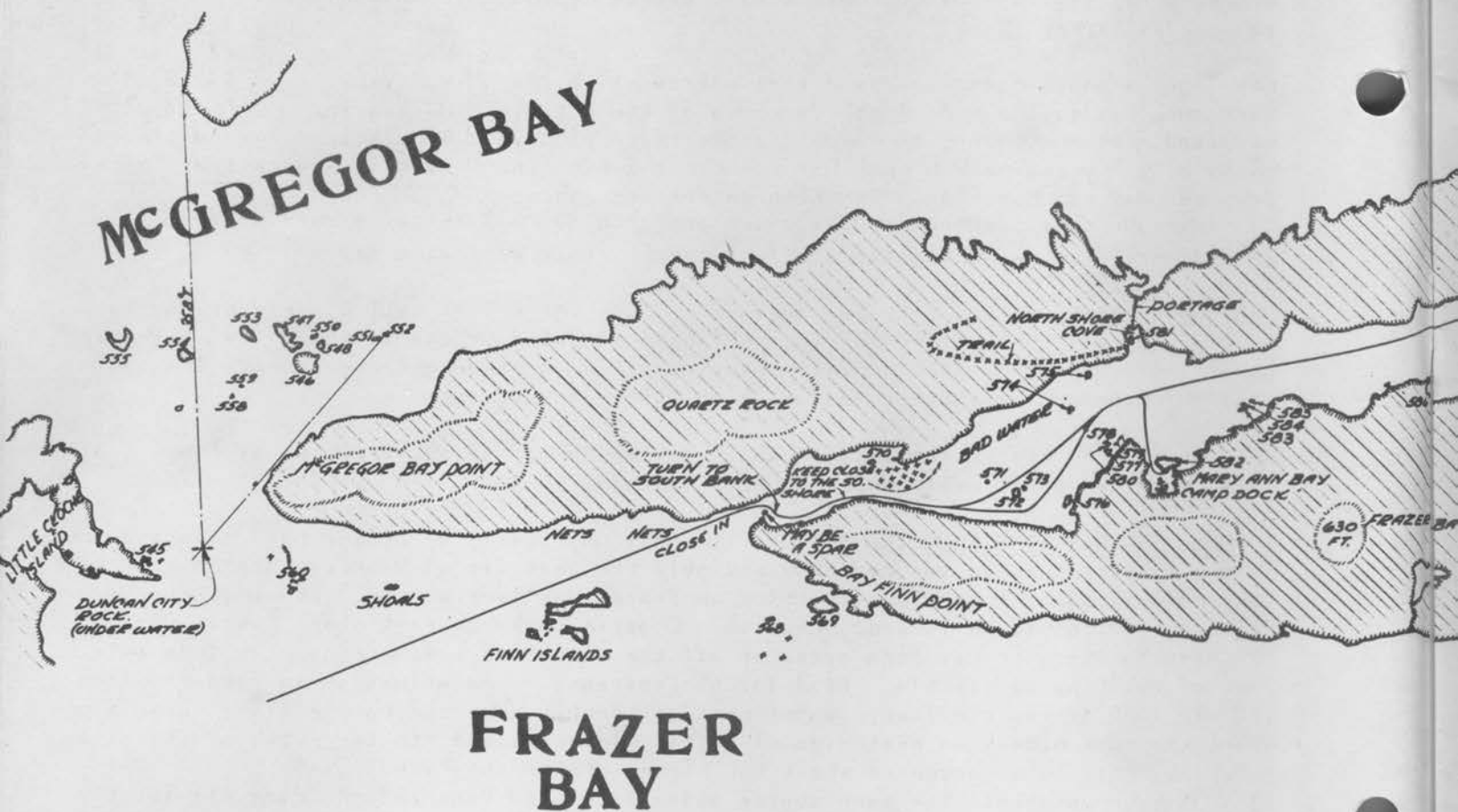
CAUTIONS: (1) To the NW of the Finn Islands is a rocky reef shown in the diagram in this report. Grant Turner and a surveyor carefully located this reef for us. The course line runs between this reef on the northerly side and the Finn Islands on the southerly side. (2) There are usually many fish stakes along the mainland shore between McGregor Bay Point and Finn Point.

IF APPROACHING BAY FINN FROM MCGREGORY BAY. Take course 188° T from about 50 yards west of McGregor Bay Point as shown in report on McGregor Bay (N.C. 84) until reaching the line from the little cove on the east side of Little Cloche Island and the north tangent of Finn Islands. Then follow directions for approaching Bay Finn as if from the south. We do not recommend the course from McGregor Bay Point skirting the shores to the Bay Finn Entrance as shown on some maps although it is navigable.



Looking south over entrance to Bay Finn. Okeechobee Lodge dock in cove. Most cooperative owner.

Lodge overlooks Frazer Bay.



DIRECTIONS FOR THE LONG OUTER PART OF BAY FINN. (1) The entrance is narrow. Approach slowly; hold closely to the north shore through the passage. (This area was dredged to depth of 14-1/2 feet in 1939 and the easterly end of the south side of this dredged area is usually marked with a red spar.)

(2) When the Finn Point shore curves away to the south, turn to starboard and head for a point about 50 yards off the first of the rounding points jutting from the south shore. From this point,

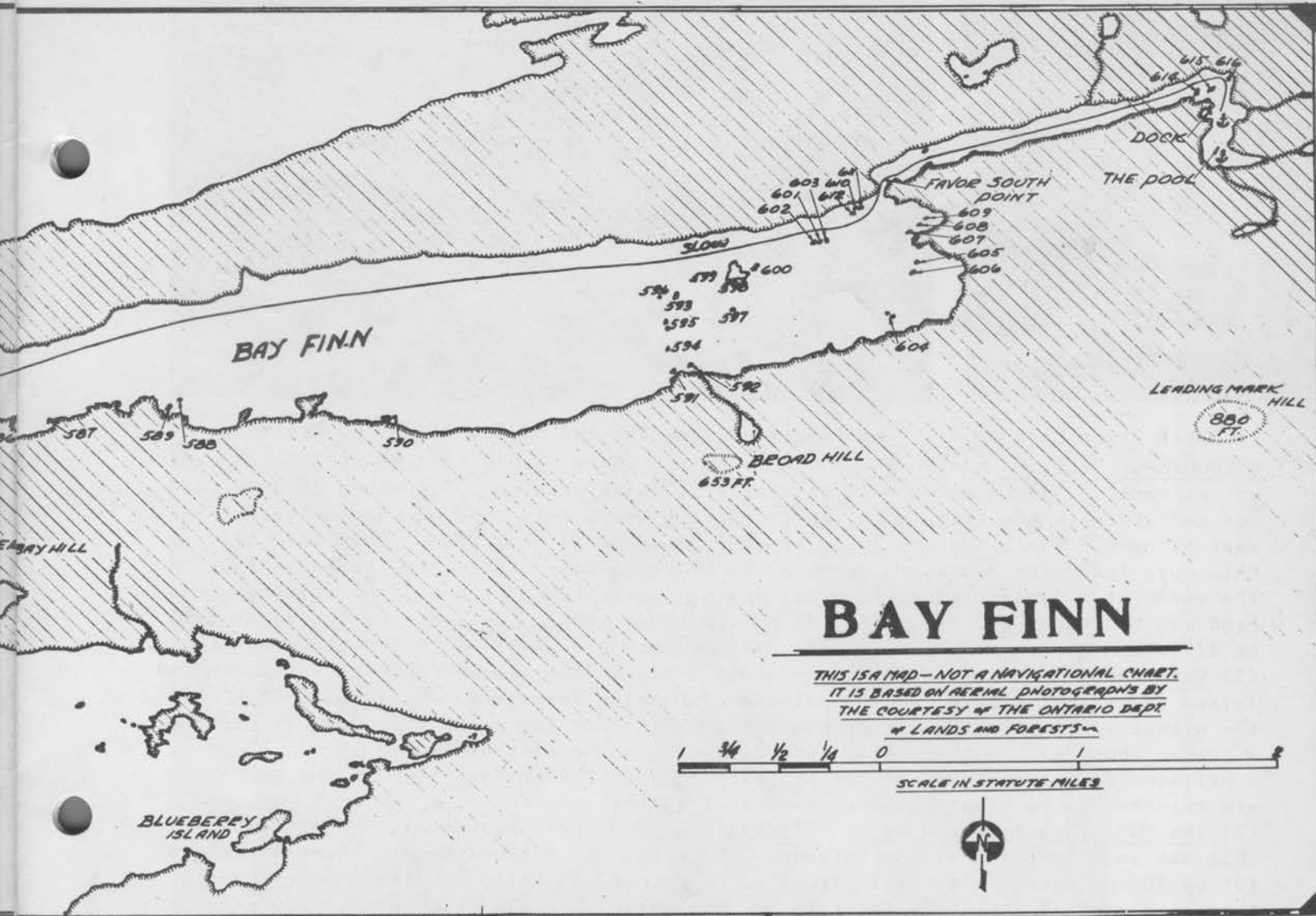
(3) Follow the cliff on the south shore close aboard for about 3/4 miles to avoid the rocks and shoals to the north shown on our diagram map and chart 2286.

(4) Pass between Island 572 and the south shore.

(5) Take Course 042° T for about 1/2 mile (leaving Islands 572 and 573 to port, i.e., pass on their easterly sides).

(6) When well up towards the north side of the bay, gradually swing to the east as you close with the shore. (Note: Directions for Mary Ann Bay on the south behind Island 582 and also for cove to the north appear later in this report.).

(7) Follow along north shore a reasonable distance off for about 5 miles at which place islands 599, 598, 600 should be on the starboard bow.



- (8) Continue along the north shore passing between the mainland on the north (port) and the group of islands 599, 598, 600 and the group of islands 601, 602, 603 on the south. (The two groups of islands to be left to south stretch out for about a mile).
- (9) The next group of islands, numbers 610, 611, 612 are about 1/4 mile to the east and north. These are to be left to port. They are just outside the entrance to the very narrow inner section of the Bay called "The Pool". Approach slowly!
- (10) Favor the southeast point of the mainland. There is a submerged rock close to the center of the passage entrance which in the low water year of 1931 had about 5 feet of water over it.
- (11) Pass between Island 613 on the north and the mainland on the south.
- (12) Substantial depths of water for deep draft sailboats are reported from Island 613 for the next 1-1/2 miles easterly through the narrows.
- (13) Round sharply to the south between islands 615 and 616 going about 1/2 mile south to the anchorage.

NOTE: Most of the islands mentioned in the Bay Finn are bare rocks.



In North Shore Cove

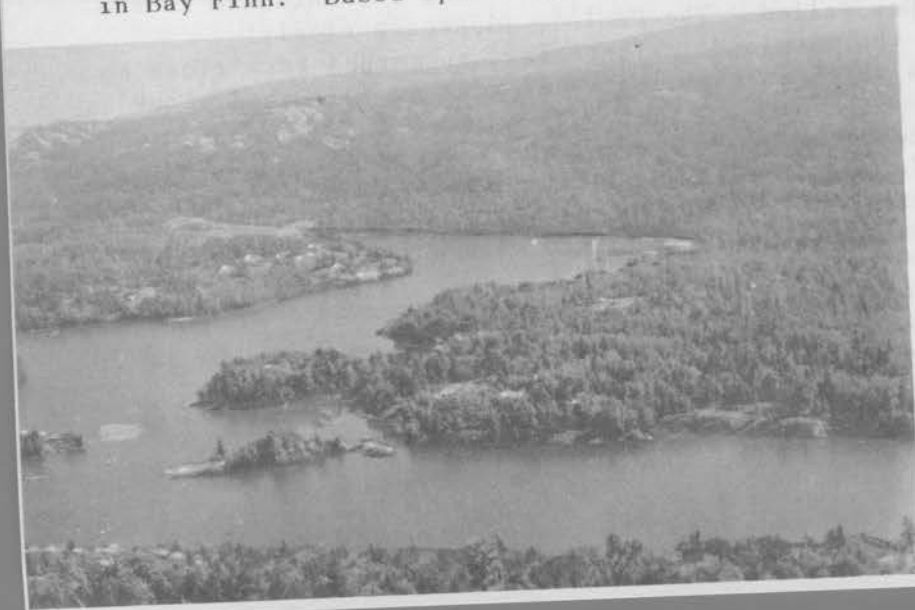
Looking west from far end of Bay Finn - E. Croisant.

ANCHORAGES: (1) Cove with Island 581 on north shore of Bay Finn about 2 miles east of entrance. Julian Bobbs, in his sailboat *JUJAN* drawing 5' is shown in here tied bow and stern to the trees. Bottom is rock so use a trip line on your anchor if you want it back. There are about 30' to 40' of water in this cove. From the head of this cove leads the old canoe portage to McGregor Bay. From the southwest side of the cove at a large boulder a trail leads to the top of the hill overlooking Bay Finn and McGregor Bay. This affords a remarkable view. **Caution:** Do not climb over or disturb any fresh rock falls - They may be loose and start a dangerous rock slide.

(2) Mary Ann Cove on the south shore about 2 miles from the entrance. It is behind Island 582 which is owned by a syndicate of Detroit Yachtsmen. Many think this cove the nicest spot on Bay Finn. Approach this cove from the north shore of Bay Finn on a course about due south passing into the cove to the west of Island 582. There is a private dock on the south side of Island 582. The bottom here is mud and there are reported to be about 30 feet or more of water.

(3) The Pool (Inner or End Bay). There is a good, private dock in the NW corner of this bay in connection with a cottage. The bottom is mud and weedy. There are about 12' to 20' of water. A trail from the SE corner of this bay leads a few hundred yards to a small but very interesting lake which abounds with bass (of uncertain quality). Crater Lake, 3/4 of a mile NE of this Bay is beautiful. Hikes of any of the surrounding hills will be well repaid by the views. If any number of yachts lie here for any time, it may be dangerous to use the water because of lack of circulation. Fill water tanks before entering.

SERVICES: A phone may be available at house of caretaker for lumber company. This house is on mainland east of Island 615. A summer hotel (Okeechobee Lodge) is located on Finn Point. Ice and meals are available here. More than 6' of water at L.W.D. on north side of hotel dock - south side very shoal. Fishing reported good in Bay Finn. Based upon information from H. F. Wood and others.



Looking south
over The Pool

Crater Lake

Two lower pictures by H.T. Randall



Photo courtesy Ontario Dept. Lands & Forests.
Bay Finn - Showing the Eastern Section of McGregor Bay to the North and Frazer to the South.
McGregor Bay Point marking the entrance is at the extreme left.

N