

NC-88 Usual Reason Cove and Papa's Bay

06/26/2023 Julie Thorndycraft

From Usual Reason to...

[Baie Fine \(NC-83\)](#), 6 miles SW
[Heywood Island \(NC-77\)](#), 8 miles SW

[Killarney \(GB-57\)](#), 16 miles SE
[Little Current \(NC-17\)](#), 13 miles W

Usual Reason quick reference...

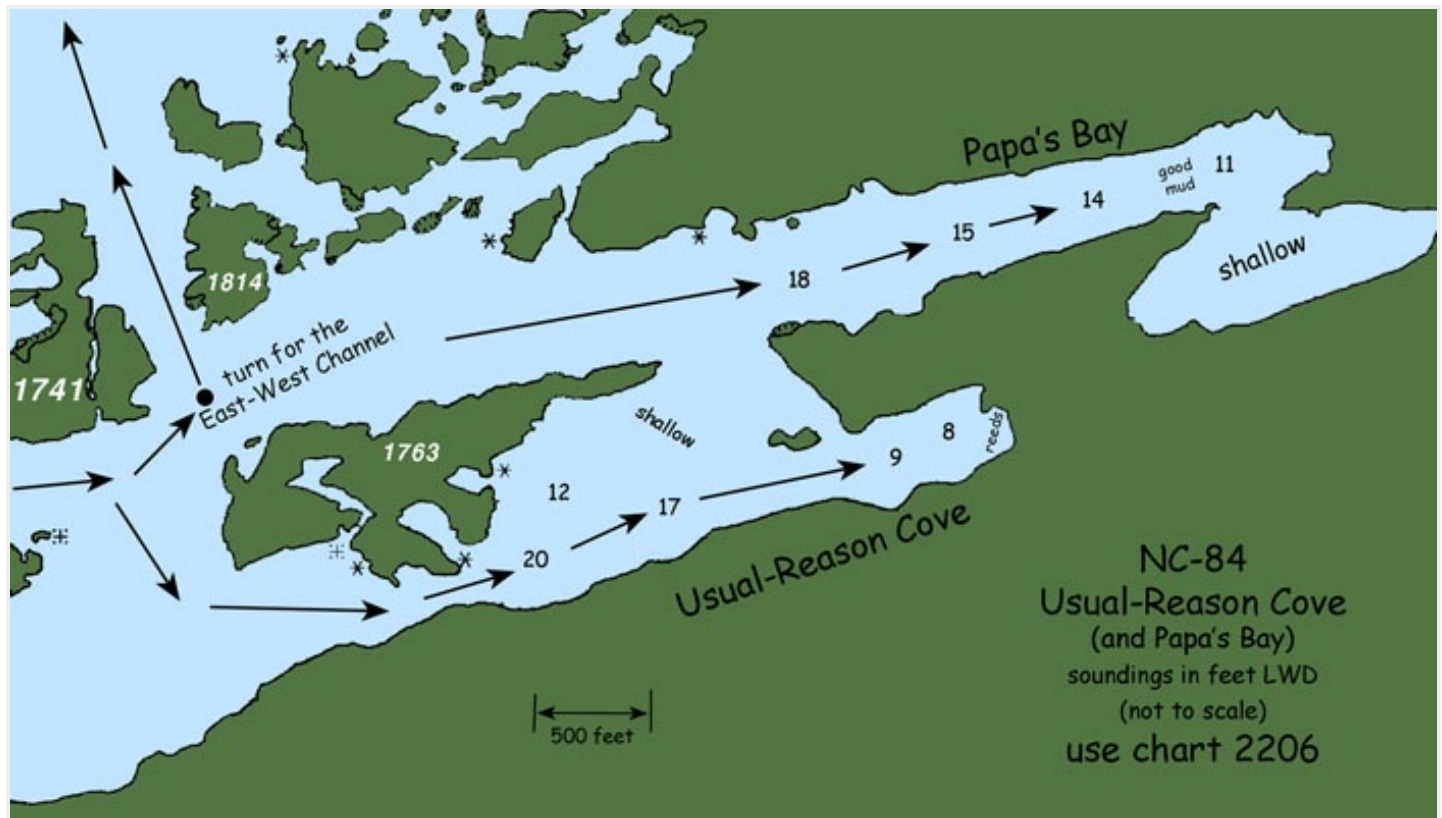
Type of harbor	remote anchorages	Services	none
Location	46° 02.91' N, 081° 33.34' W	Dockage	no
Charts	2206, GLCC chart #3	Anchorage	yes
Port Captain	no	Shore access	yes

Introduction

Usual Reason Cove and Papa's Bay are two good alternatives to the East-West Channel for cruisers in the eastern end of McGregor Bay. There are no cottages, and much of the shoreline is accessible—part of the Killarney Provincial Park.

Approaches

Approach information for the first 4 miles eastward into McGregor Bay—up to the sharp turn north and then east at the two small islands—is contained in harbor report [NC-84, McGregor Bay Intro](#).



After the turn, a practically straight and clearly defined passage passes through a lane of islands on approximately course 080° T, almost to island 1763. A good waypoint for the beginning of that

passage is approximately 46° 02.57' N, 081° 36.46' W. Proceed on that 080° T course, but slowly! **Note** that there are many cottage docks along this route—no wake!

Maintaining the 080° course, continue on to island 1741. Here you can continue straight on into the anchorage at Papa's Cove or you can turn right (south) to the anchorage at Usual Reason Cove, or you can turn left to head northerly to [Crooked Arc Cove \(NC-88.5\)](#) and the [East-West Channel Anchorage \(NC-89\)](#) through the passage that opens up.



Looking east into the anchorage at Usual Reason Cove. Photo by Daniel DeWeese.



Anchorage area on the island marked as 1763. Photo by Daniel DeWeese.

Anchorage

When at the end of the eastward track at island 1741, **Papa's Bay** is directly ahead of you. You can continue straight in, between islands 1814 and 1763, and anchor anywhere. Strong west/southwest wind will kick up a little chop, but it is surprisingly protected even in those winds. For shallow-draft boats, the shallow cove at the southeast end of Papa's is a perfect "hurricane hole."

More protected is **Usual Reason Cove**, just south of Papa's Bay. To enter, turn south just before

island 1741 and pass west of island 1763. Aim at the south shore, until the Cove opens up to your east. There is a minimum depth of 20 feet down the center of this opening, until you're well into the cove.

Excellent anchorage is available just inside the cove (off island 1763 on the GLCC map)—where the 12-foot sounding is shown on the sketch chart—or all the way down at the east end, in 8-9 feet of water. **Note** that there are some deadheads, particularly in the far east end.



1) Anchorage at Usual Reason, just off island 1763. 2) The Usual Reason anchorage, at the very east end. Jo Schneider photos.

Exploring

There are a great many other navigable passages in this end of the Bay, and the area offers a great chance for exploring. But go slowly and take care at all times.

There are several good hiking trails on the peninsula that separates McGregor Bay from Bay Fine. The best (and most challenging) is accessed about a quarter mile west of the entrance to Usual Reason.

There is a firepit on top of the rock cliff on island 1763 in Usual Reason.

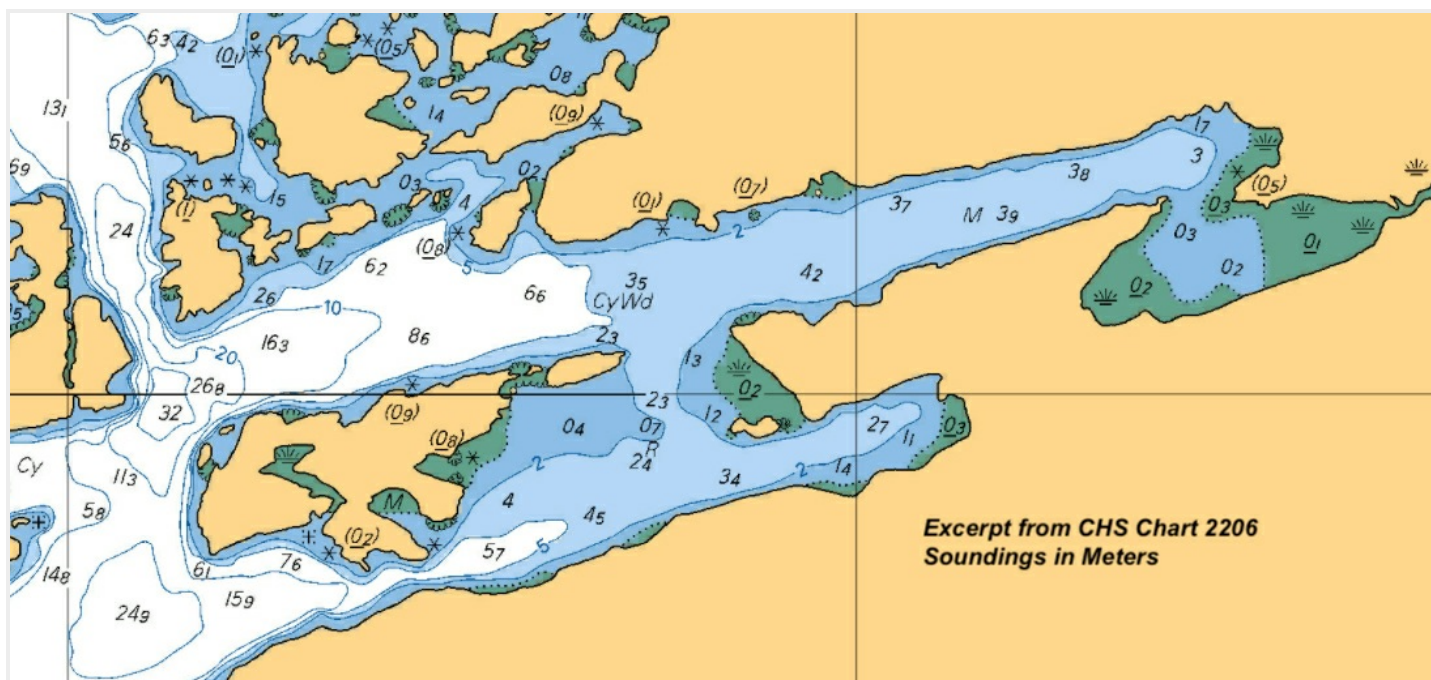
Fishing is good in the area.



1) Looking west towards the entrance of Usual Reason Cove, photo by Julie Thorndycraft. 2) Some of the rugged rocks on the climb to the peak just west of Usual Reason Cove. Photo by JoEllen Schneider.

Report by Ron Dwelle

Enlarged Chart Excerpt For PDF Files



Not to be used for navigation. All content copyright © 2023 by GLCC.