

NC-50.1 Bear's Bottom Bay

07/17/2022 Julie Thorndycraft

From Bear's Bottom to...

[John Harbour, \(NC-49\)](#), 4.5 miles SW

[Turnbull Island \(NC-55\)](#), 7 miles W

[Moiles Harbour, \(NC-47\)](#), 3 miles SE

[Blind River \(NC-59\)](#), 15 miles W

Bear's Bottom quick reference...

Type of harbor	anchorage	Services	none
Location	46° 10.12' N, 082° 36.65' W	Dockage	no
Charts	CHS 2259, 2268	Anchorage	yes
Light List numbers	none	Population	few cottagers

Introduction

This cove, just to the east of Bear Fall Harbour, lies about 0.3 miles north of Lett Island. On chart 2268, the cove is unnamed—the inelegant name of “Bear’s Butt” is used by local North Channel sailors.

The cove is well protected from winds from the southwest clockwise to the east. For south and southeast winds, there’s a fetch of approximately a mile, so it can become uncomfortable in strong winds from those directions.



Looking northwest over the bay. The point on the left is the south edge of the bay, photo by Venetia Moorhouse.

Entrance

The approach is straightforward from the Whalesback. From either side of Nelles Island, proceed north toward Lett Island. Lett can be passed on either side, but note the rocks off the east end of Lett. From the west edge of Lett Island, steer approximately 340° T to the cove. **Caution:** Note the charted rocks on 2268—dangerous but easily avoided with careful piloting. Refer also to the approaches and sketch in [NC-50](#).

Anchorage

The cove gradually shallows from 13-14' at the entrance to 5-6' in the northwest corner. Anchor in 8-10' in the middle of the cove. There's room for 2 or 3 boats to swing. **Note** that there are some rocks along the south shore, just off the reeds. Bottom is clay.

There are the remains of an old cottage on the northeastern shore behind the island that separates

Bear Fall Cove and Bear Bottom Bay. The cottage on the eastern shore, once heavily used, now seems abandoned. Along the north shore there is a small sandy beach. There are usually good blueberries in season. It's an easy dinghy trip into Bear Fall Cove and Beardrop.

Report by Venetia Moorhouse and Susan Durchslag

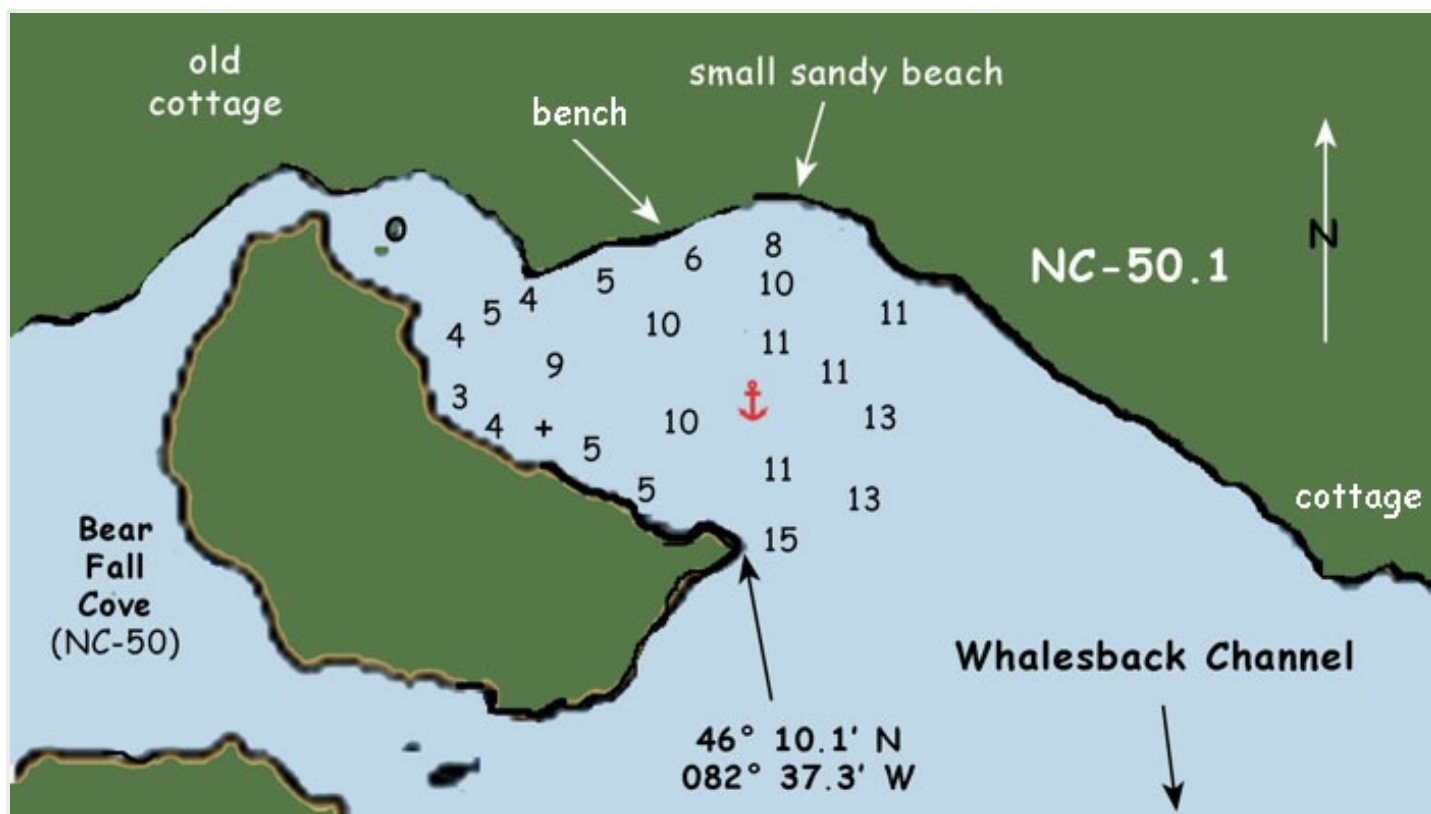


Sandy beach at Bear's Bottom Bay. Photo by Venetia Moorhouse.

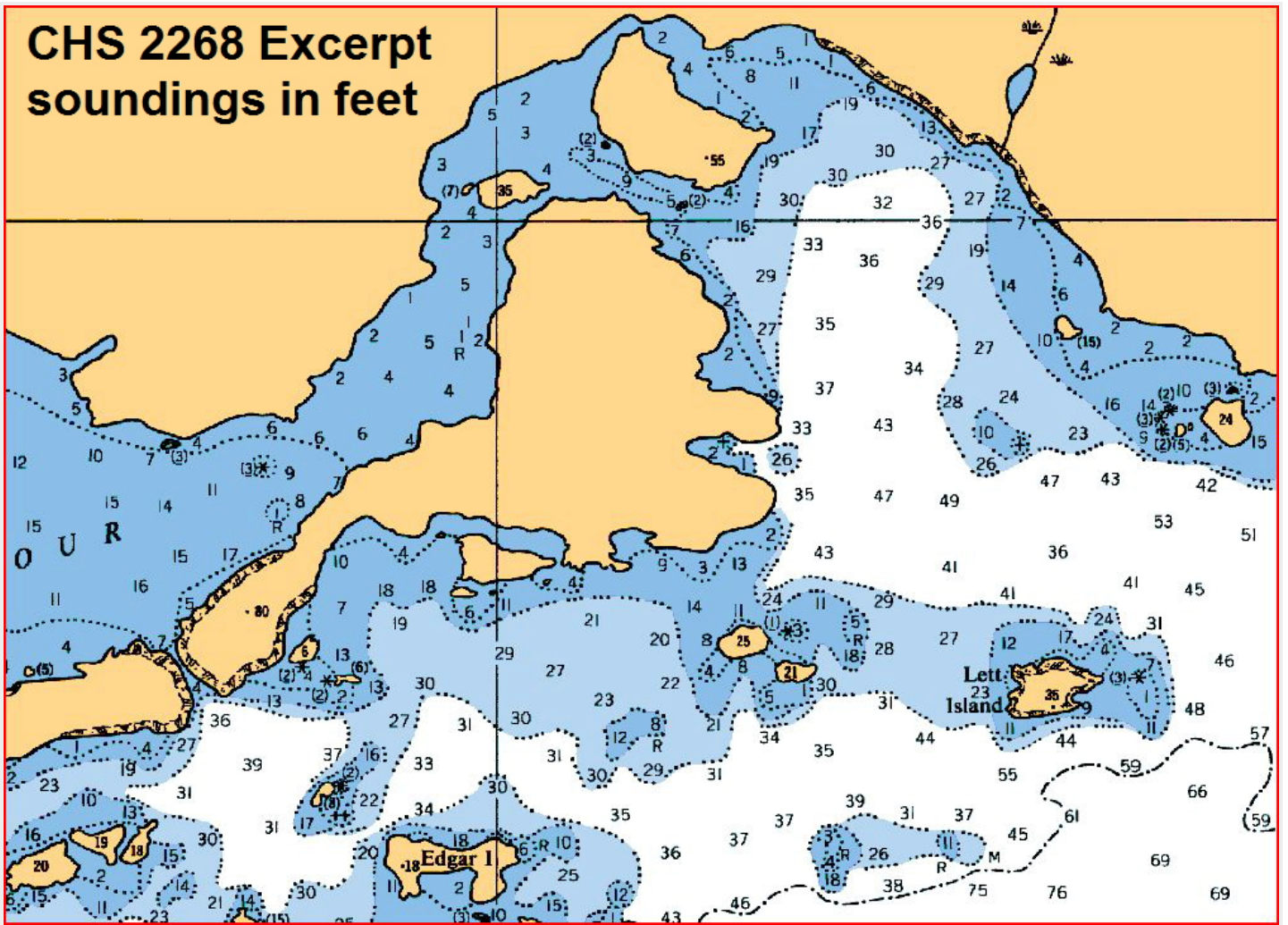


Black bear strolling the shore at Bear's Bottom, photo by Ron Dwelle.

Enlarged Chart Excerpt For PDF Files



CHS 2268 Excerpt soundings in feet



Not to be used for navigation. All content copyright © 2022 by GLCC.