

MACKINAC ISLAND, MICH.

St. Ignace, (H-78), 5 miles, St. James, (M-2) 49 miles, Charlevoix, (N-6), 63 miles, Cheboygan, (H-75), 20 miles, Detour, (H-83), 39 miles.

This island of about six square miles lies in the Straits of Mackinac. The harbor on the SE corner is semicircular. It is open to the SE. It is protected from westerly, northerly, and southerly winds, but in heavy southeasterly winds it is subject to the seas funneling from Lake Huron.

A section of U.S. Chart 60 is in this section of the book.

H-77	1952
U.C. Charts	6, 60
Lat. 45° 51' N	
Long. 84° 37' W	
Mag. Var. 1952 3° W	
Annual Change	
Negligible	
Population	700
Lighted Aids	832 - 848



If approaching from the west, observe North and South Graham Shoals both with little water on them. (In 1952 South Graham Fl. W. 6 sec.; North Graham Fl. G. 4 sec.). The Grand Hotel, a large, long colonaded building on the bluff about 1/2 mile to the west of the harbor is a good land mark.

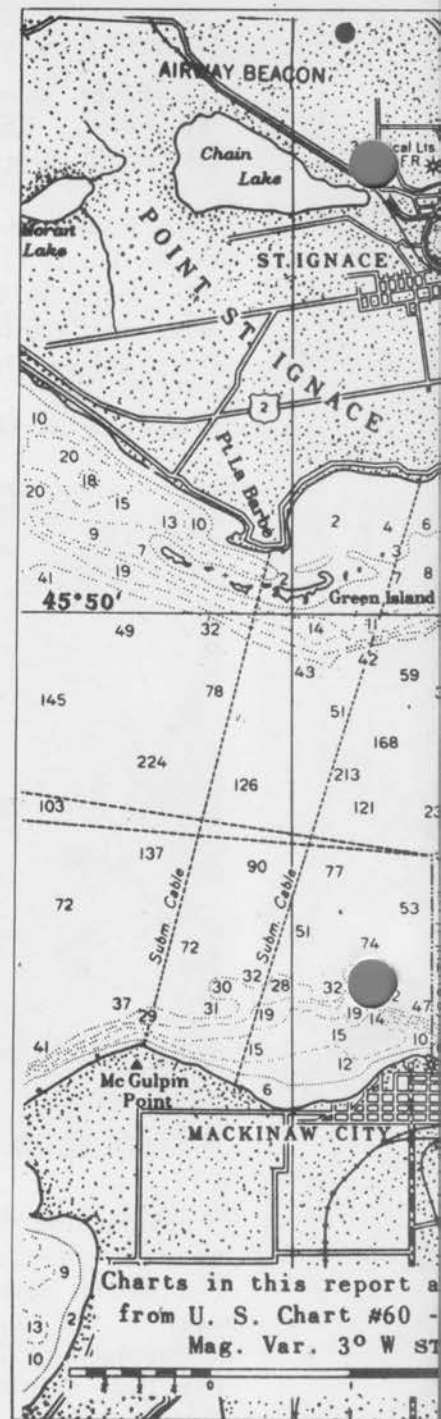
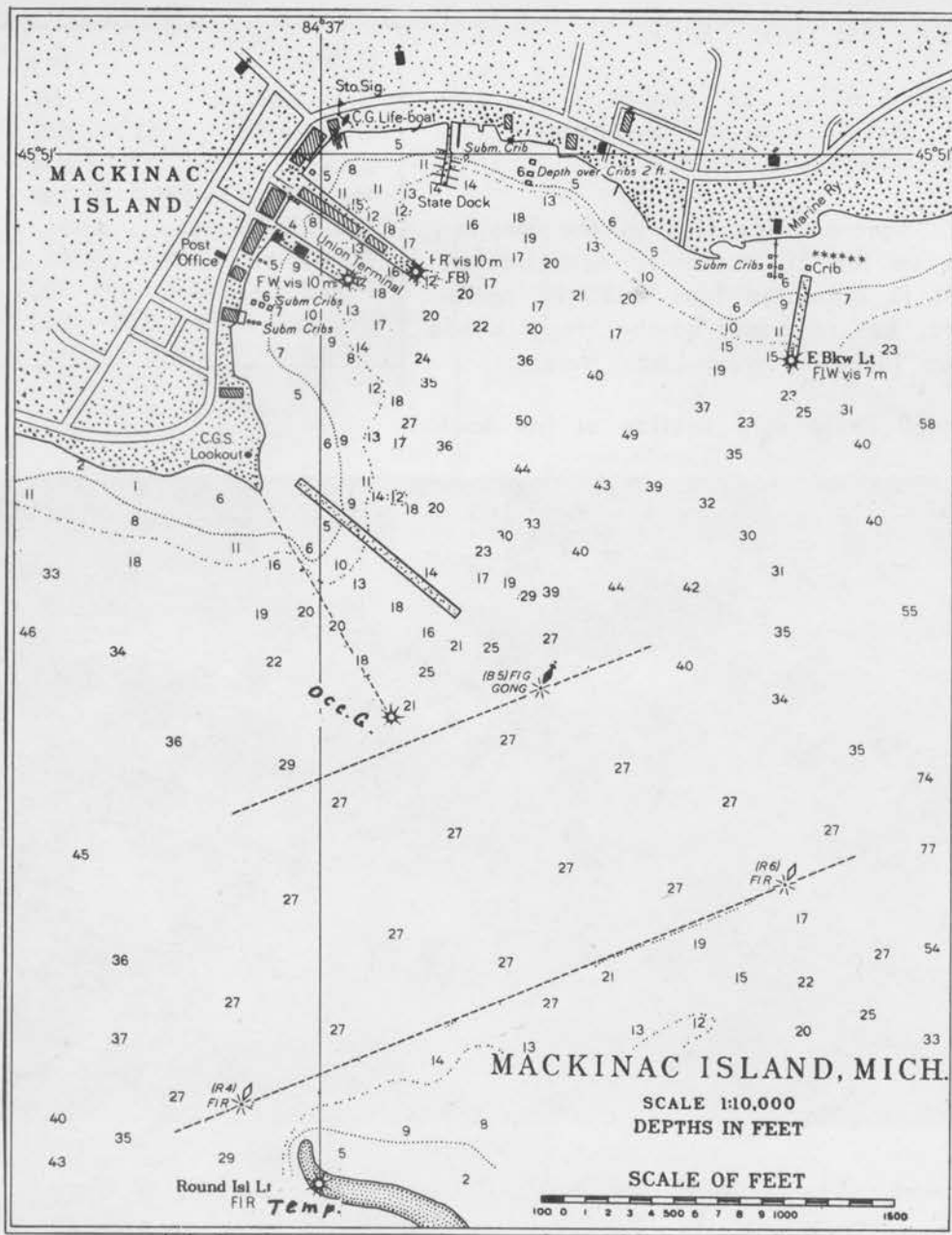
If approaching from the east, observe shoal spot about 1 mile east of Round Island. The Fort on the bluff to the N of the harbor is a fine land mark from the E.

If approaching from the southeast, observe Zela Shoal running out almost 2 miles from west shore of Bois Blanc Island. This shoal is not lighted. It is marked with Red Nun 16 (1952).

CAUTION: Through the passage between Mackinac Island and Round Island pass most of the freighter traffic into and from Lake Michigan.

ANCHORAGE & DOCKS: The State of Michigan maintains a yacht dock with several slips on either side which may be used for a nominal cost per day or week. Watchmen service is maintained. The two large steamer docks in the NW corner of the harbor are commercial and are privately owned. They may be used on permission from dock offices at foot of longer dock.

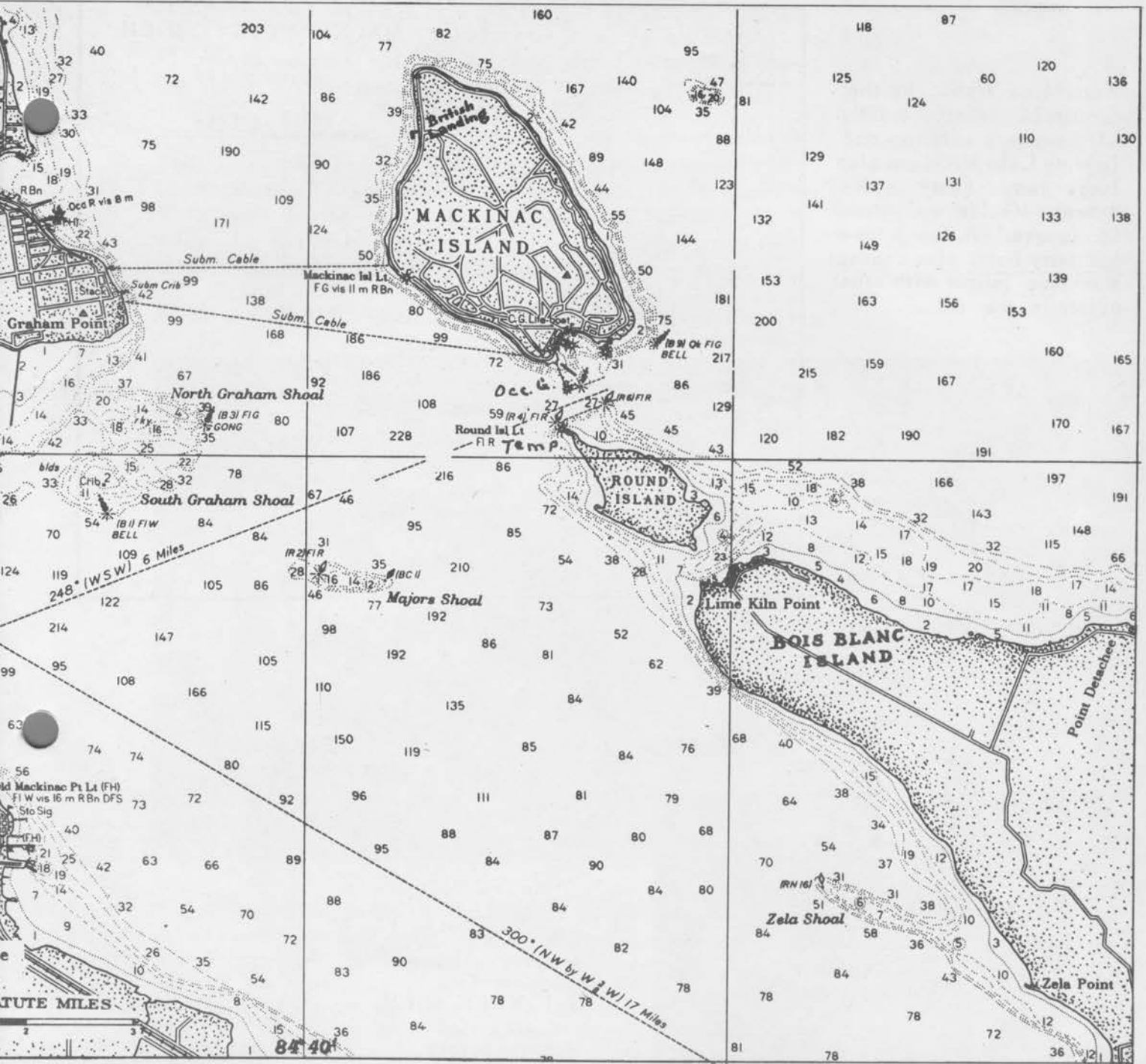
Anchorage - to N and E of larger commercial dock, center of harbor, or SW of coal dock, allowing plenty of room for the many ferry boats and lake passage steamers using the big docks. A few reports indicate bottom none too good for holding in heavy SE winds. In case heavy SE winds require moving from the harbor anchorage, there is good holding ground and a dock at the spot marked on the accompanying chart as "British Landing" to the NW side of the island.



For beauty and historic interest Mackinac Island cannot be surpassed. Its tall limestone cliffs, its thick forests, its historic buildings are worth traveling far to see. It is a very popular summer resort and port of call for lake passenger steamers.

No automobiles are allowed on the island, but numerous carriages and bicycles are available for hire to tour the island.

SERVICES: FUEL, on more southerly commercial dock near shore and at dock just east of State dock; ICE, from yacht dock master; WATER, on yacht dock by hose; electric outlets also available; DOCTOR, M. H. Bowers; HOSPITAL, Emergency service hospital at Fort. State Police have stretcher service for emergency trip to Little Traverse Hospital, Petoskey; MECHANIC, Services available; MARINE RAILWAY, None here but a very good one at Hellel, Mich.; in Les Cheneaux Islands (H-81), 3 miles from Mackinac Island, capacity up to 45' length, with fine mechanics; also Majestic Service, Cheboygan, Mich.; capacity up to 50' length. HOTELS, RESTAURANTS, GROCERS, etc., in abundance a few blocks from docks. MACKINAC YACHT CLUB is located across the road from the state dock; TRANSPORTATION, Ferry to mainland, St. Ignace and Mackinaw City for connections to railroads and bus lines; steamers to Chicago and Detroit.



Round Island Passage looking SE from Grand Hotel



