

An aerial photograph of the Great Lakes region, showing the five lakes and surrounding land. The image is colorized with a green and blue palette, where the water is a deep teal and the land is a lighter, textured green. The title 'THE GREAT LAKES FOUNDATION' is written vertically on the left side in a blue, serif font.

THE

GREAT LAKES FOUNDATION®

Have you always wanted  
to contribute to the  
prosperity of your  
Great Lakes but didn't  
know the route to take?

The Great Lakes Foundation is the place to start! Over the years the Foundation has helped many harbors, foundations, museums, schools, and other Great Lakes related entities including the University of Wisconsin, Grand Marais Harbor, and more recently the Door County Maritime Museum & Lighthouse Preservation Society. The Foundation has assisted monetarily in actions such as dredging, preservation, maintenance, and education, among others.

So if you have found it in your heart and pocketbook, please invest in the future of our Great Lakes! Generations of maritime nurturers, including you, will be happy you did.

<http://www.glclub.com/great-lakes-foundation>

*Please see the back of this flyer for more detailed information about the Great Lakes Foundation.*





*The Great Lakes Foundation (GLF) is dedicated to preserving the richness of wilderness cruising areas of the Great Lakes and to fostering the art and science of cruising.*

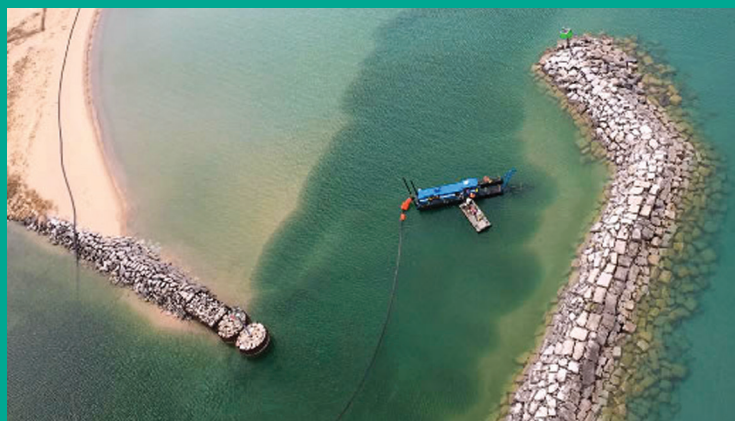
## PURPOSE

The Great Lakes Foundation (GLF) is organized exclusively for charitable, educational or scientific purposes within the meaning of Section 501(c)(3) of the United States Internal Revenue Code of 1986, as amended from time to time. By way of illustration and not by way of illumination, the Foundation's purposes include assembling and publishing detailed information about harbors, anchorages and wilderness cruising areas in the Great Lakes; promoting marine safety through education, including publications and seminars; and protecting and preserving wilderness areas; by its providing information that will enhance the appreciation of the Great Lakes by its members and the general public; encouraging the study and preservation of the marine environment; and supplying encouragement, information and, where appropriate, financial assistance to persons and organizations who further the purposes of the Foundation.

## ORGANIZATION

The Foundation is managed by a Board of Directors composed of the directors of the Great Lakes Cruising Club. All members of the Club are automatically members of the Great Lakes Foundation and participate in its affairs at its annual meeting. The Foundation is exempt from federal income tax as a charitable organization under 501(c)(3) of the Internal Revenue Code. Accordingly, all gifts and bequests to the Foundation by U.S. citizens qualify for income tax deduction.

Thank you for your support, and remember that what we can do for the Great Lakes is good for all who cruise their waters. Should you have further questions, please contact us at: [glfoundation@att.net](mailto:glfoundation@att.net).



Please visit the GLF website where you can:

**Learn more about the Foundation**  
**See the grants awarded for Great Lakes Activities**  
**Download the Grant Application Form**  
**Contribute to the Foundation**  
**Make a Memorial Contribution**

<http://www.glcclub.com/great-lakes-foundation>

