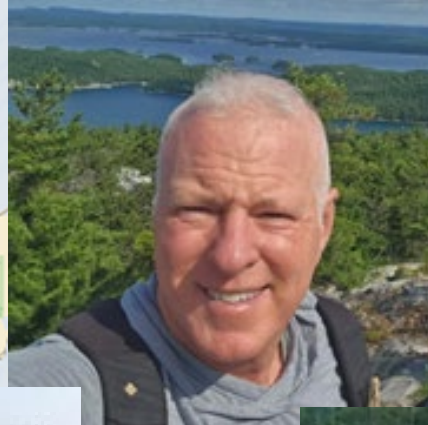
A map of the Great Lakes region, including Lake Superior, Lake Michigan, Lake Huron, Lake Erie, and Lake Ontario. The map shows state and provincial boundaries, major cities, and water bodies. Overlaid on the map are two large text blocks. The first block, 'GLCC 2026 Summer Flotilla', is centered in the upper half of the map. The second block, 'Preliminary Routes, Stops and Mileage', is centered in the lower half of the map. Several small green rectangular markers are scattered across the map, primarily along the western and northern shores of the lakes, indicating potential stops or routes. The text is in a large, bold, black font.

GLCC 2026 Summer Flotilla

Preliminary Routes, Stops and Mileage

GLCC Presenters



Top Row: Dee McClure, Mark Wild, Joe McKeown
Bottom Row: Rob Hillman, Nelson Stone

A map of the Great Lakes region, showing the five Great Lakes (Superior, Michigan, Huron, Erie, and Ontario) and the surrounding landmasses of North America. The map is overlaid with a semi-transparent white box containing text. The text is in a large, bold, black font. The map shows various cities and regions, including Thunder Bay, Sault Ste. Marie, Marquette, Escanaba, Traverse City, Green Bay, Appleton, Fond du Lac, Madison, Milwaukee, Grand Rapids, Flint, Detroit, Toledo, Cleveland, Buffalo, Rochester, Toronto, Peterborough, Barrie, Owen Sound, Kingston, Brockville, Ottawa, and various parts of Ontario, Michigan, Wisconsin, Illinois, Indiana, Ohio, Pennsylvania, and New York. The text is centered on the map, covering the central and eastern parts of the Great Lakes basin.

Webinar Topics

- Ports of Call including services available with references to specific Harbor Report
- Insights on navigating particularly tricky areas
- Discussion of alternate stops
- Identification of which ports the GLCC has arranged dockage slip holds and/or discounts

Why a Flotilla?

- **Adventure for Everyone**

- weekend to long term cruising options including Mac Island Rally, Rally at the Soo or Rendezvous at Superior



- **Hop On, Hop Off Flexibility**

- adjustable schedule-



- **Float Plan Itinerary & Support**

- providing insights/perspectives from experienced cruisers, providing confidence to extend your cruising area



What a Flotilla is not....

- **Mandatory “follow the leader” formation:**
Nope – that’s not it! Come and go as you please!
- **Inflexible: Weather dictates everything.**
Weather change = potential change to route and/or dates. Gumby flexibility always important!
- **Responsibility: Each boat responsible for its own course/route choice.** Review Harbor Reports and check out GLCCSchool webinars for detailed information on ports and cruising areas.



GLCC 2026 Summer Flotilla Preliminary Routes (updated)



A map of the Great Lakes region (Superior, Michigan, Huron, Erie, and Ontario) serves as the background. The text is overlaid on the map. The title 'Related GLCC School Webinars*' is at the top center. Below it is a list of six webinar topics. At the bottom, there is a note about webinar availability for members.

Related GLCC School Webinars*

- **Cruising Lake Huron** with Rob Hillman
- **Introduction to Cruising Lake Superior** with Dave Carr
- **Cruising Lake Superior's South Shore** with Niels Jensen
- **Cruising Lake Superior's Apostle Islands** with Niels Jensen
- **Wilderness Cruising Lake Superior's Isle Royale** with Niels Jensen
- **Navigating Locks** with Bill Rohde

**Webinars are always available as recordings. Webinars/recordings are free to GLCC Members*

Example of a Harbor Report

05/28/2025 GLOC Office

From Mackinac Island to...

Chibougan (11.75) , 14 miles SE	Mackinac City (11.76.5) , 6 miles SW
De Tour Passage , 31 miles ENE	Beaver Island (16.2) , 42 miles WSW
Hessel (11.81.2) , 13 miles NE	Harbor Springs (14.4) , 54 miles SSW

Mackinac Island quick reference...

Type of harbor	Ideal cruising destination	Fuel	gasoline
Location	45° 50.06' N, 084° 36.92' W	Pump-out	yes
Charts	NOIS 14880, 14881	Poy horns	yes
Light List numbers	12535-12651	Dockage	yes
Coast Guard	at St. Ignace	Anchorage	marginal
Provisions	yes	Repairs	no
NOAA Weather	Forecast		
Population	300 winter/3000 summer		
GLOC Port Captain			

Introduction

This island of 4 square miles lies in the Straits of Mackinac. To the island, is semicircular, open to the southeast. The artificial westerly, northerly, and southerly winds, but in heavy southern heavy surge.

For many cruisers, Mackinac Island is the end destination for a stop-over on a longer cruise. Because automobiles and other things the island, it is a perfect place for walking and bicycling, and it gets) are generally splendid.



1) Looking west, with St. Ignace in the distance. Fred Mc courtesy of Michigan DNR.

The only shortcoming for the cruiser is that the island is so pretty—without a reservation, you may have a wait before you can get

From the west, observe the dangerous North and South Graham Shoals are clear. The Grand Hotel—a large white colonnaded building on the west of the harbor—is a good landmark.

From the east, observe the unmarked shoal (3 feet, LMD) about 1 mi. Otherwise the approaches are clear. The fort on the bluff just north of from the east.

From the southeast, observe Zeta Shoal, running out about 2 miles. Blaise Island, marked by red nun "6." Otherwise, this approach is clear

From Mackinac City, head for Round Island light. This treatment has a cruising boats. Note Major's Shoals (10-foot charted depth). Ferry has so times each hour.



1) Looking southeast. Photos courtesy of Michigan State Waters. Entering the harbor, State Docks dead ahead. Ron Dwellie photo

Caution: through the passage between Mackinac Island and Round Island freighter traffic into and from Lake Michigan, principally the large on Superior and the steel mills of Gary. In addition, watch for the ferries Ignace—they throw a considerable wake and sometimes pass close by

Caution: there has always been a surge in this harbor! Come boat—only the practice of good seamanship will be sure to be length, as you will have to tie off your boat as you would in a swell caused by freighters, ferries, and pleasure craft.

The large commercial pier just southwest of the State Dock is and the second large pier southwest is known locally as the "but arrangements can sometimes be made for tie-up, esp. State Dock. Contact Arnold Transit Company at their office on the I try any of the other private docks in the harbor, unless you're

Anchorage
There is an anchorage area east of the large commercial dock east breakwall. Allow plenty of room for ferry and pleasure to

The bottom is none too good for holding in any winds, with red clay. Use of a heavy-duty anchor and a constant watch are re-ensure, only to return rapidly in the dinghy as the boat drags buoy, since all are privately owned.

Should strong southwest winds drive you out of the harbor as bay on the northwest side of the island marked on the map of "Landing." A lee may also be found off Round Island, though

Services
The island is not a good place for marine services. Gasoline is a medical center, on Market Street appointment, or 909-847-3962 ambulance, fire and police services at Mission Point Resort, the

In town you'll find many hotels, and tourist traps than you'll see almost Double Oven Bakery opens at 5:30 chaf at the Grand before he refire—not to mention better parts for

For groceries, liquor, wine and beer, Doubs Mercantile (just west of the State Dock) is good with fresh fruits, vegetables, cheese, and delisense chickens, if somewhat expensive (not the best spot to repurchases). A pharmacy, Allford's Drugs, is next to Doubs. Baker's goods can be had at J.L. Bessary, east end of the marina, or Martha's Sweet Shop, near the coal dock. A laundromat is just east of the Bessary.

Sorry, the Mackinac Island Yacht Club has no reciprocity, and their small facility (across from the State Dock) is without public restaurant or bar.

Commercial transportation to and from the island is either by ferry to St. Ignace or Mackinac City, or by chartered air from the island's small air strip. In town, horse-and-buggy taxis are available on the main street at a fixed rate to destination. No motorized vehicles are permitted on the island.

unlike in other marinas, most cruisers will stay until the last minute. The dockmasters will give do their best to tell you your chances of getting a slip.

If you are put on the waiting list, it is necessary to anchor out, or you can tie to the coal dock (and expensive). The dockmaster will call you on the radio when a slip is available. If you go in a dinghy from the anchorage, be sure to check in at the dock house at the end of the main to let the dockmaster know where you are. They will always try to call you a number of times, but there is no response and they cannot see your boat at anchor, they may bump you from the list

The dockmaster and dock attendants follow the waiting list rigorously—they've heard every and every argument in the dock, and the chances of someone leaptrogging the waiting list are Also, the dockmaster enforces a no-tipping rule, no matter how many zeros follow the first digit

During the busiest season, there may be a wait of several days for a slip. And you may not leave harbor or you will lose your position on the waiting list.

If you are given a choice, best slips are inside along shore, where you can barbecue in front of boat.

Note that at the time of the finish of both the Chicago-to-Mack and the Port Huron-to-Mack races (usually the 2nd & 3rd weekends in July), the marina is taken over by the racers (Sunday, Wednesday) and slip space is not available. Cruisers occasionally object to this, but they will be fighting a 100-year tradition.

The Marina's dock office has a limited supply of electrical extension cables available. If you are that this is not a big operation as Mackinac Island, if at all possible nearby. There are no marine repairs done of the decking and pilings.

New bathroom and shower facilities were completed in July 2

Caution: there has always been a surge in this harbor! Come boat—only the practice of good seamanship will be sure to be length, as you will have to tie off your boat as you would in a swell caused by freighters, ferries, and pleasure craft.

The large commercial pier just southwest of the State Dock is and the second large pier southwest is known locally as the "but arrangements can sometimes be made for tie-up, esp. State Dock. Contact Arnold Transit Company at their office on the I try any of the other private docks in the harbor, unless you're

Anchorage
There is an anchorage area east of the large commercial dock east breakwall. Allow plenty of room for ferry and pleasure to

The bottom is none too good for holding in any winds, with red clay. Use of a heavy-duty anchor and a constant watch are re-ensure, only to return rapidly in the dinghy as the boat drags buoy, since all are privately owned.

Should strong southwest winds drive you out of the harbor as bay on the northwest side of the island marked on the map of "Landing." A lee may also be found off Round Island, though

Services
The island is not a good place for marine services. Gasoline is a medical center, on Market Street appointment, or 909-847-3962 ambulance, fire and police services at Mission Point Resort, the

In town you'll find many hotels, and tourist traps than you'll see almost Double Oven Bakery opens at 5:30 chaf at the Grand before he refire—not to mention better parts for

For groceries, liquor, wine and beer, Doubs Mercantile (just west of the State Dock) is good with fresh fruits, vegetables, cheese, and delisense chickens, if somewhat expensive (not the best spot to repurchases). A pharmacy, Allford's Drugs, is next to Doubs. Baker's goods can be had at J.L. Bessary, east end of the marina, or Martha's Sweet Shop, near the coal dock. A laundromat is just east of the Bessary.

Sorry, the Mackinac Island Yacht Club has no reciprocity, and their small facility (across from the State Dock) is without public restaurant or bar.

Commercial transportation to and from the island is either by ferry to St. Ignace or Mackinac City, or by chartered air from the island's small air strip. In town, horse-and-buggy taxis are available on the main street at a fixed rate to destination. No motorized vehicles are permitted on the island.

Exploring
In spite of the hassle of getting a slip, for beauty and historic interest, Mackinac Island cannot be

Continuing on around the island, you'll be riding for half the circumference under a high bluff. First it's East Bluff, then Peshtigo Bluff overlooking Peshtigo Beach (named after the 1880 wreck of the lumber barge Peshtigo battered to pieces in a storm just offshore), then post Driftwood Springs and Arch Rock, barely visible from the road.

The north and west sides of the island are more wooded, with fewer famous features. British Landing is worth a stop—this is the place the British came ashore in the war of 1812. From here they marched across the island and walked in the back door of the fort, taking the Americans by surprise (the Tanks didn't yet know the war had been declared). The Americans tried the same landing two years later, with disastrous results.

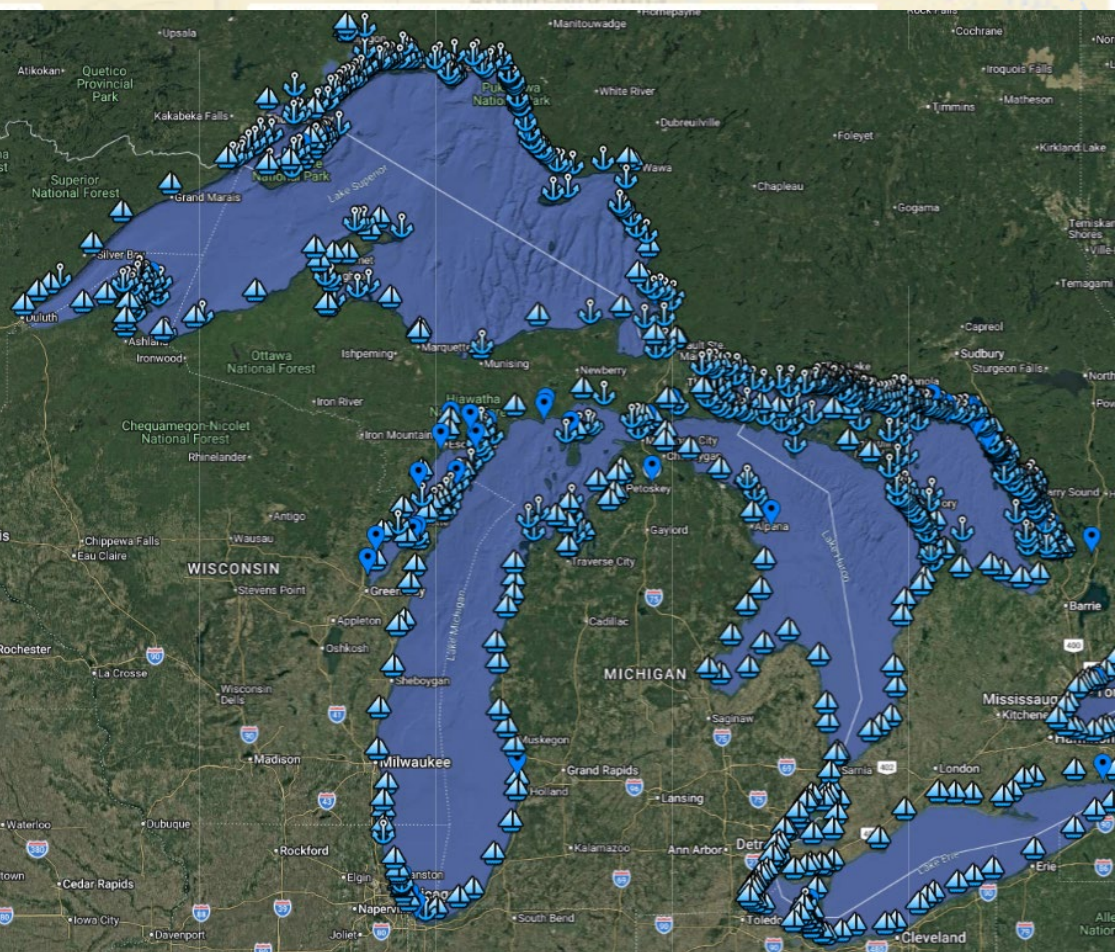
On the west and south shores of the island, you come back into civilization (if war seems can't truly be called civilization), first seeing a huge scar in the island's west bluff—an alerted ski-hill undertaken for the class pleasure of the religious college's students, but abandoned before completion when the IRS called the funds home.

Continuing on around the island, you'll be riding for half the circumference under a high bluff. First it's East Bluff, then Peshtigo Bluff overlooking Peshtigo Beach (named after the 1880 wreck of the lumber barge Peshtigo battered to pieces in a storm just offshore), then post Driftwood Springs and Arch Rock, barely visible from the road.

The north and west sides of the island are more wooded, with fewer famous features. British Landing is worth a stop—this is the place the British came ashore in the war of 1812. From here they marched across the island and walked in the back door of the fort, taking the Americans by surprise (the Tanks didn't yet know the war had been declared). The Americans tried the same landing two years later, with disastrous results.

On the west and south shores of the island, you come back into civilization (if war seems can't truly be called civilization), first seeing a huge scar in the island's west bluff—an alerted ski-hill undertaken for the class pleasure of the religious college's students, but abandoned before completion when the IRS called the funds home.

Continuing on around the island, you'll be riding for half the circumference under a high bluff. First it's East Bluff, then Peshtigo Bluff overlooking Peshtigo Beach (named after the 1880 wreck of the lumber barge Peshtigo battered to pieces in a storm just offshore), then post Driftwood Springs and Arch Rock, barely visible from the road.



Continuing on around the island, you'll be riding for half the circumference under a high bluff. First it's East Bluff, then Peshtigo Bluff overlooking Peshtigo Beach (named after the 1880 wreck of the lumber barge Peshtigo battered to pieces in a storm just offshore), then post Driftwood Springs and Arch Rock, barely visible from the road.

The north and west sides of the island are more wooded, with fewer famous features. British Landing is worth a stop—this is the place the British came ashore in the war of 1812. From here they marched across the island and walked in the back door of the fort, taking the Americans by surprise (the Tanks didn't yet know the war had been declared). The Americans tried the same landing two years later, with disastrous results.

On the west and south shores of the island, you come back into civilization (if war seems can't truly be called civilization), first seeing a huge scar in the island's west bluff—an alerted ski-hill undertaken for the class pleasure of the religious college's students, but abandoned before completion when the IRS called the funds home.

Continuing on around the island, you'll be riding for half the circumference under a high bluff. First it's East Bluff, then Peshtigo Bluff overlooking Peshtigo Beach (named after the 1880 wreck of the lumber barge Peshtigo battered to pieces in a storm just offshore), then post Driftwood Springs and Arch Rock, barely visible from the road.

The north and west sides of the island are more wooded, with fewer famous features. British Landing is worth a stop—this is the place the British came ashore in the war of 1812. From here they marched across the island and walked in the back door of the fort, taking the Americans by surprise (the Tanks didn't yet know the war had been declared). The Americans tried the same landing two years later, with disastrous results.

On the west and south shores of the island, you come back into civilization (if war seems can't truly be called civilization), first seeing a huge scar in the island's west bluff—an alerted ski-hill undertaken for the class pleasure of the religious college's students, but abandoned before completion when the IRS called the funds home.

Continuing on around the island, you'll be riding for half the circumference under a high bluff. First it's East Bluff, then Peshtigo Bluff overlooking Peshtigo Beach (named after the 1880 wreck of the lumber barge Peshtigo battered to pieces in a storm just offshore), then post Driftwood Springs and Arch Rock, barely visible from the road.

The north and west sides of the island are more wooded, with fewer famous features. British Landing is worth a stop—this is the place the British came ashore in the war of 1812. From here they marched across the island and walked in the back door of the fort, taking the Americans by surprise (the Tanks didn't yet know the war had been declared). The Americans tried the same landing two years later, with disastrous results.

On the west and south shores of the island, you come back into civilization (if war seems can't truly be called civilization), first seeing a huge scar in the island's west bluff—an alerted ski-hill undertaken for the class pleasure of the religious college's students, but abandoned before completion when the IRS called the funds home.

Continuing on around the island, you'll be riding for half the circumference under a high bluff. First it's East Bluff, then Peshtigo Bluff overlooking Peshtigo Beach (named after the 1880 wreck of the lumber barge Peshtigo battered to pieces in a storm just offshore), then post Driftwood Springs and Arch Rock, barely visible from the road.

The north and west sides of the island are more wooded, with fewer famous features. British Landing is worth a stop—this is the place the British came ashore in the war of 1812. From here they marched across the island and walked in the back door of the fort, taking the Americans by surprise (the Tanks didn't yet know the war had been declared). The Americans tried the same landing two years later, with disastrous results.

On the west and south shores of the island, you come back into civilization (if war seems can't truly be called civilization), first seeing a huge scar in the island's west bluff—an alerted ski-hill undertaken for the class pleasure of the religious college's students, but abandoned before completion when the IRS called the funds home.

Continuing on around the island, you'll be riding for half the circumference under a high bluff. First it's East Bluff, then Peshtigo Bluff overlooking Peshtigo Beach (named after the 1880 wreck of the lumber barge Peshtigo battered to pieces in a storm just offshore), then post Driftwood Springs and Arch Rock, barely visible from the road.

The north and west sides of the island are more wooded, with fewer famous features. British Landing is worth a stop—this is the place the British came ashore in the war of 1812. From here they marched across the island and walked in the back door of the fort, taking the Americans by surprise (the Tanks didn't yet know the war had been declared). The Americans tried the same landing two years later, with disastrous results.

Continuing on around the island, you'll be riding for half the circumference under a high bluff. First it's East Bluff, then Peshtigo Bluff overlooking Peshtigo Beach (named after the 1880 wreck of the lumber barge Peshtigo battered to pieces in a storm just offshore), then post Driftwood Springs and Arch Rock, barely visible from the road.

The north and west sides of the island are more wooded, with fewer famous features. British Landing is worth a stop—this is the place the British came ashore in the war of 1812. From here they marched across the island and walked in the back door of the fort, taking the Americans by surprise (the Tanks didn't yet know the war had been declared). The Americans tried the same landing two years later, with disastrous results.

On the west and south shores of the island, you come back into civilization (if war seems can't truly be called civilization), first seeing a huge scar in the island's west bluff—an alerted ski-hill undertaken for the class pleasure of the religious college's students, but abandoned before completion when the IRS called the funds home.

Continuing on around the island, you'll be riding for half the circumference under a high bluff. First it's East Bluff, then Peshtigo Bluff overlooking Peshtigo Beach (named after the 1880 wreck of the lumber barge Peshtigo battered to pieces in a storm just offshore), then post Driftwood Springs and Arch Rock, barely visible from the road.

The north and west sides of the island are more wooded, with fewer famous features. British Landing is worth a stop—this is the place the British came ashore in the war of 1812. From here they marched across the island and walked in the back door of the fort, taking the Americans by surprise (the Tanks didn't yet know the war had been declared). The Americans tried the same landing two years later, with disastrous results.

On the west and south shores of the island, you come back into civilization (if war seems can't truly be called civilization), first seeing a huge scar in the island's west bluff—an alerted ski-hill undertaken for the class pleasure of the religious college's students, but abandoned before completion when the IRS called the funds home.

Continuing on around the island, you'll be riding for half the circumference under a high bluff. First it's East Bluff, then Peshtigo Bluff overlooking Peshtigo Beach (named after the 1880 wreck of the lumber barge Peshtigo battered to pieces in a storm just offshore), then post Driftwood Springs and Arch Rock, barely visible from the road.

A map of the Great Lakes region in North America, showing the five Great Lakes (Superior, Michigan, Huron, Erie, and Ontario) and the surrounding landmasses. Major cities and towns are labeled, including Duluth, Marquette, Sault Ste. Marie, Elliot Lake, Greater Sudbury, North Bay, Maniwaki, Gracefield, Ottawa, Brockville, Kingston, Rochester, Syracuse, Buffalo, Brantford, St. Thomas, Lansing, Grand Rapids, Flint, Toledo, Cleveland, and Binghamton. The map is overlaid with text describing a flotilla's route and personnel.

Flotilla Coordinator: Rear Commodore Dee McClure

Segment 1: Lake Michigan – West: Racine to Mackinac Island

- Port Captain **Mark Wild** and Rear Commodore **Dee McClure**

Segment 2: Lake Huron: Detroit/Bay City to Mackinac Island

- Commodore **Joe McKeown**

Segment 3: Mackinac Island to Sault Ste. Marie and the Soo locks

- Rear Commodore **Rob Hillman**

Segment 4: Lake Superior: Sault Ste. Marie to Duluth/Superior

- Rear Commodore **Nelson Stone**

Segment 5: Post Rendezvous: Thunder Bay and Isle Royale

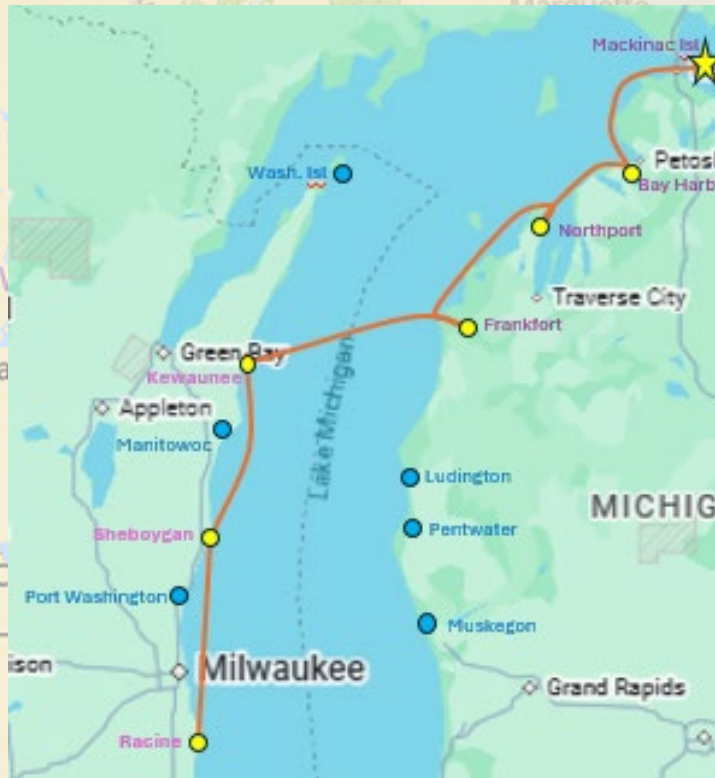
- Rear Commodore **Nelson Stone**

Segment 1: Lake Michigan – West Side Racine to Mackinac Island

Port Captain Mark Wild and
Rear Commodore Dee McClure

Preliminary Route* and dates

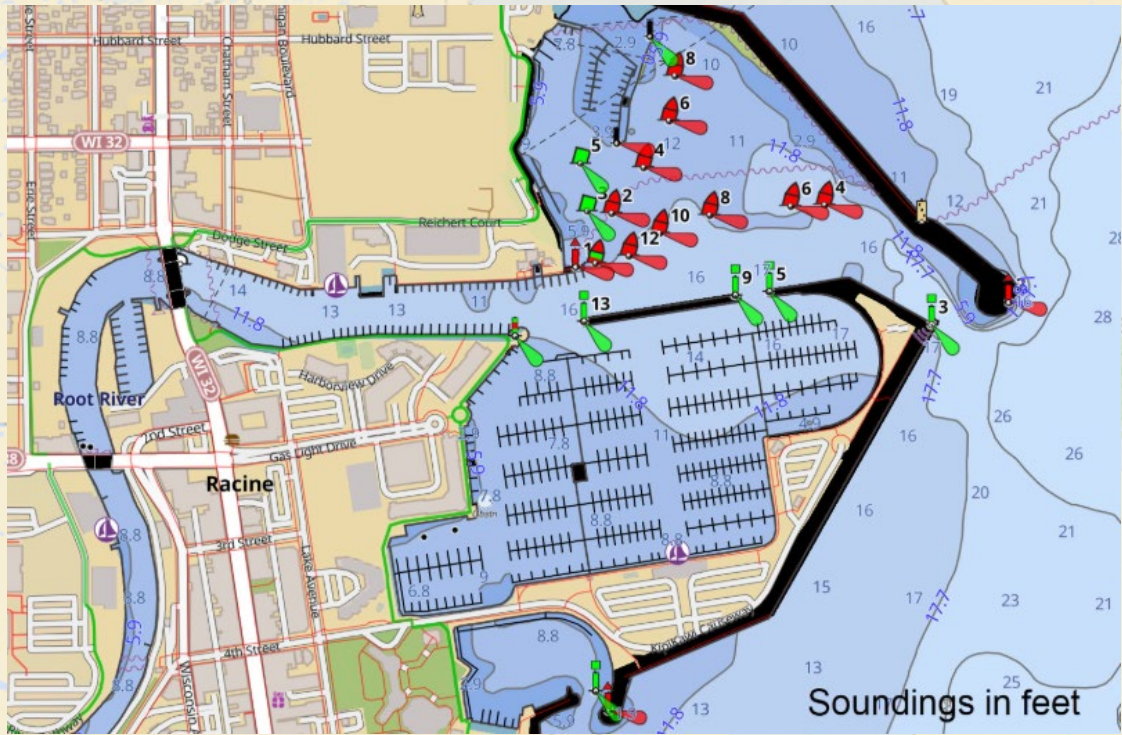
6/16 :	Racine# - Sheboygan	62 nm
6/17 :	Sheboygan – Kewaunee	45 nm
6/18 :	Kewaunee – Frankfort	55 nm
6/19 :	--- LayDay / Weather Day ---	
6/20 :	Frankfort – Northport#	59 nm
6/21 :	Northport# – Beaver Isl.	40 nm
6/22 :	Beaver Isl – Mac Island	40 nm



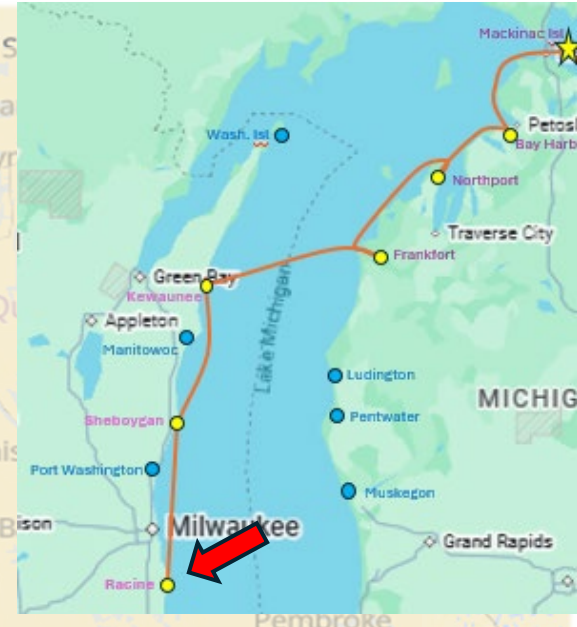
*See links for all Harbor Report at end of presentation

#Denotes harbor with a GLCC Port Captain

Racine # (M-45) – Starting Point

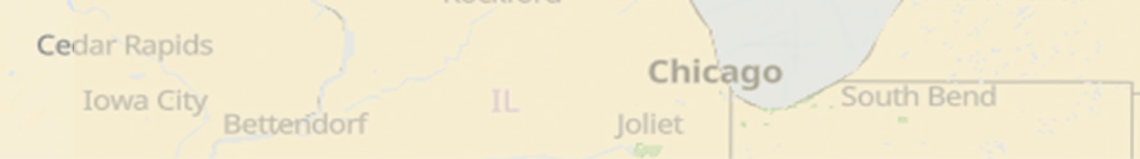


#Port Captain: Mark Wild

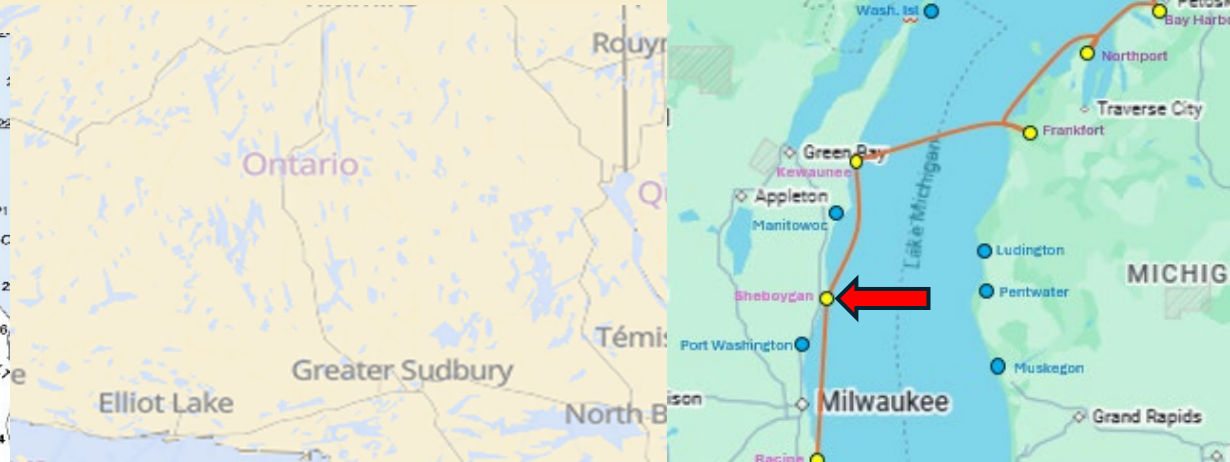
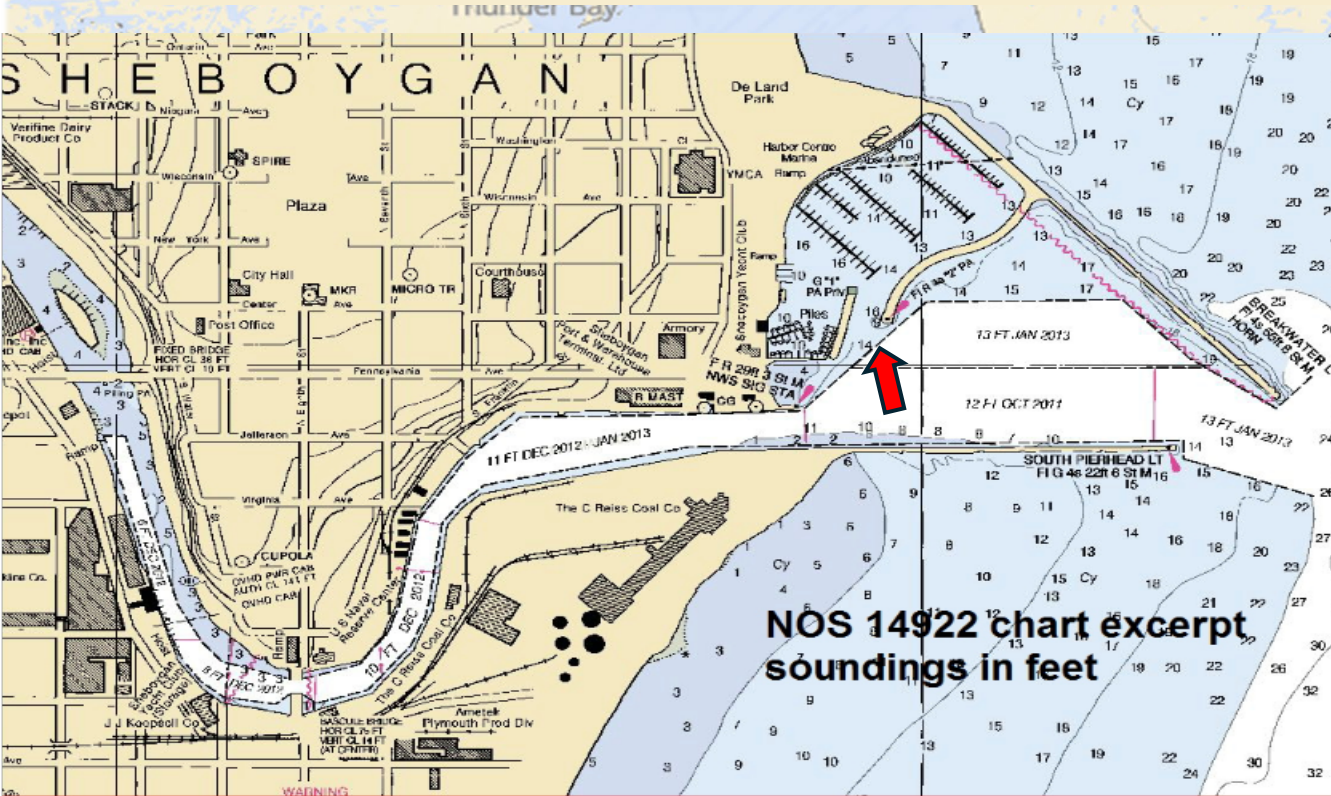


Reefpoint Marina

Services: Fuel (G/D), pump-out, 30/50 Amp, repairs, restroom/shower, restaurant, laundry, 24-hour security, heated pool/hot tub, grills



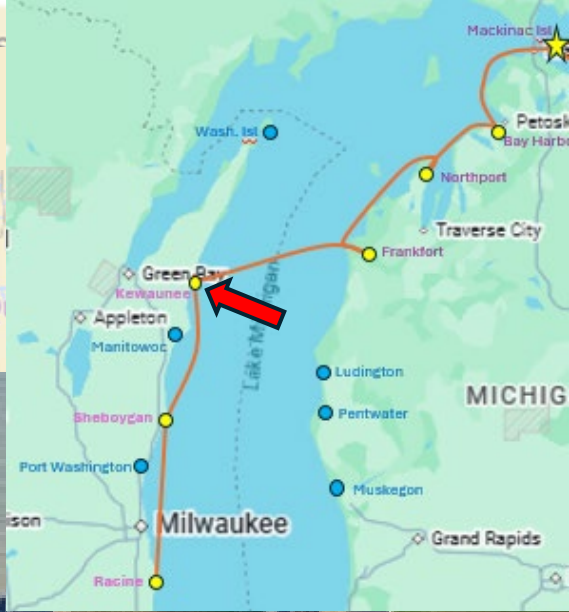
6/16: Racine to Sheboygan (M-48) - 62 nm



Harbor Centre Marina

Services Available:
Fuel (G/D), pump-out, 30/50amp service,
restrooms/showers, ice, provisioning, repairs, restaurant,
laundry, gated marina

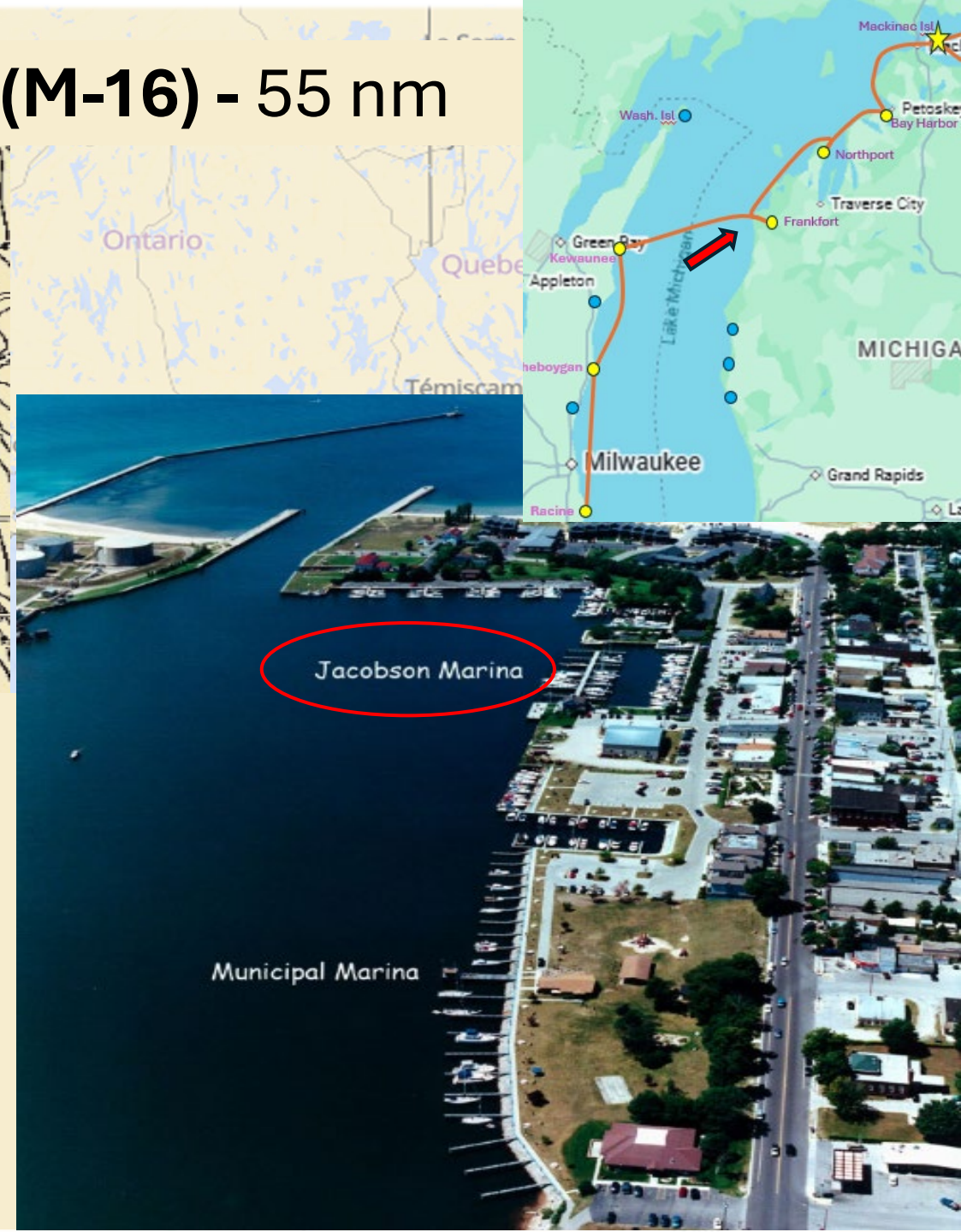
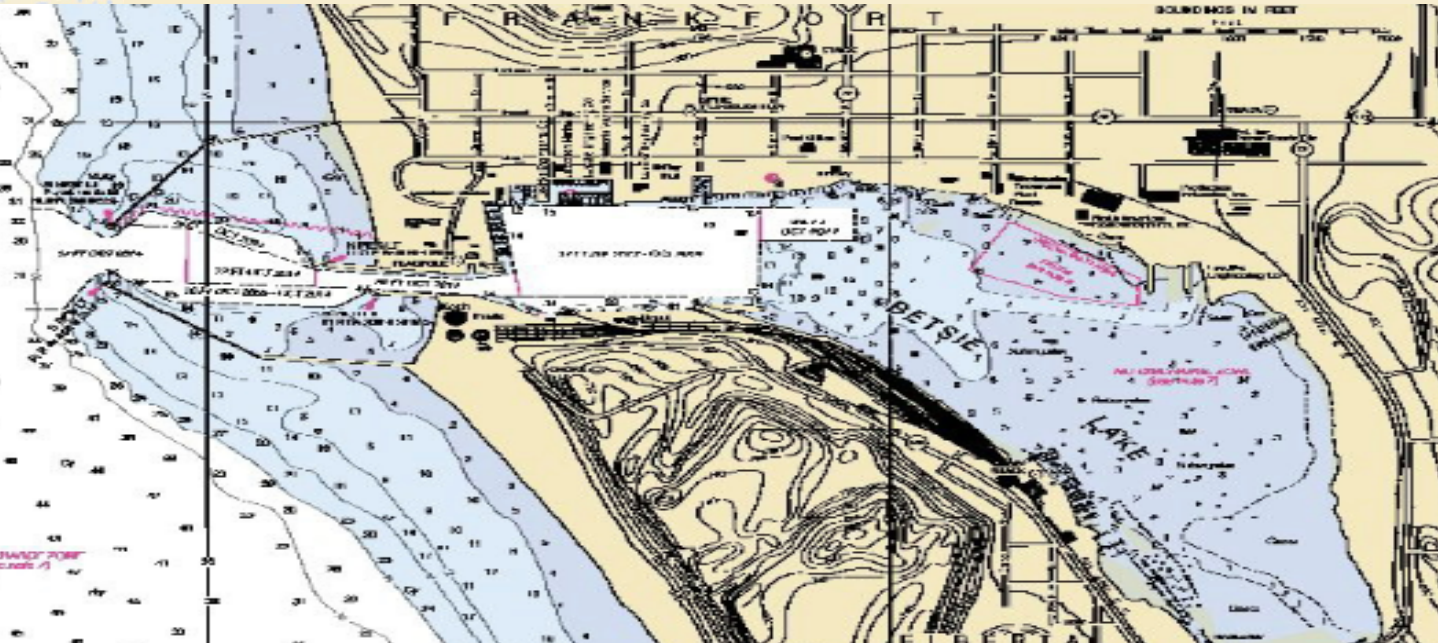
6/17: Sheboygan to Kewaunee (M-51) - 45 nm



Yachtworks Kewaunee

Services Available:
Fuel (Gas), pump-out, marine services and repairs, 100-ton Travelift, restaurant, provisions (2 mile walk)

6/18: Kewaunee to Frankfort (M-16) - 55 nm



Jacobson's Marina

Services Available:

Fuel (G/D), pump-out, 30/50amp service, restroom/showers, ice, restaurants, laundry, grills, pool, propane tank exchange, hospital, hardware store.

GLCC has a slip hold **thru March 31st**. Contact Dee McClure for hold code

Anchorage available – past Municipal Marina

6/19: Lay day/Weather day in Frankfort (M-16)

Frankfort is a major city and well worth a lay day. The city has much to offer, including:

- Beautiful Lake Michigan beach with walkway out to Breakwater Light
- Dune walk offer spectacular overlooks and walks through hardwood forests.
- Check out fabulous Lobster shack (only open for lunch)
- Bike rentals - explore Point Betsie Lighthouse or Betsie Valley Trail – a 22-mile recreational trail



Alternate Crossings and Stops

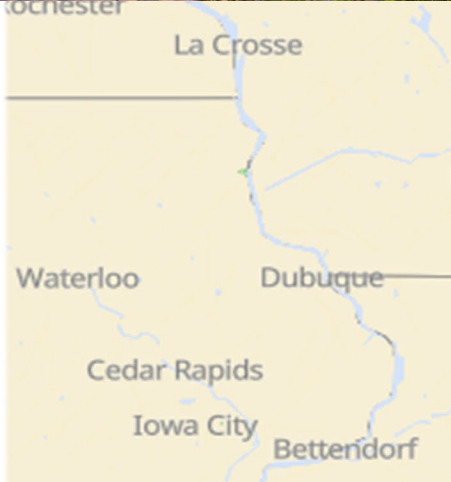
If weather conditions are not conducive to cross, an alternative is to continue northward to **Detroit Harbor* on Washington Island** and then cross.

If weather dictates crossing early, there are several options including Muskegon, Pentwater and Ludington and then proceed up the eastern side of the Lake.

*Island Outpost Marina has a slip hold for GLCC Members and offers a discount to GLCC members. Contact Dee McClure for codes.



Enroute to Northport - Photo Opp! – Sleeping Bear Dunes National Lakeshore and Point Betsie



6/21: Northport to Beaver Island (M-2) – 40 nm



Beaver Island Municipal Marina

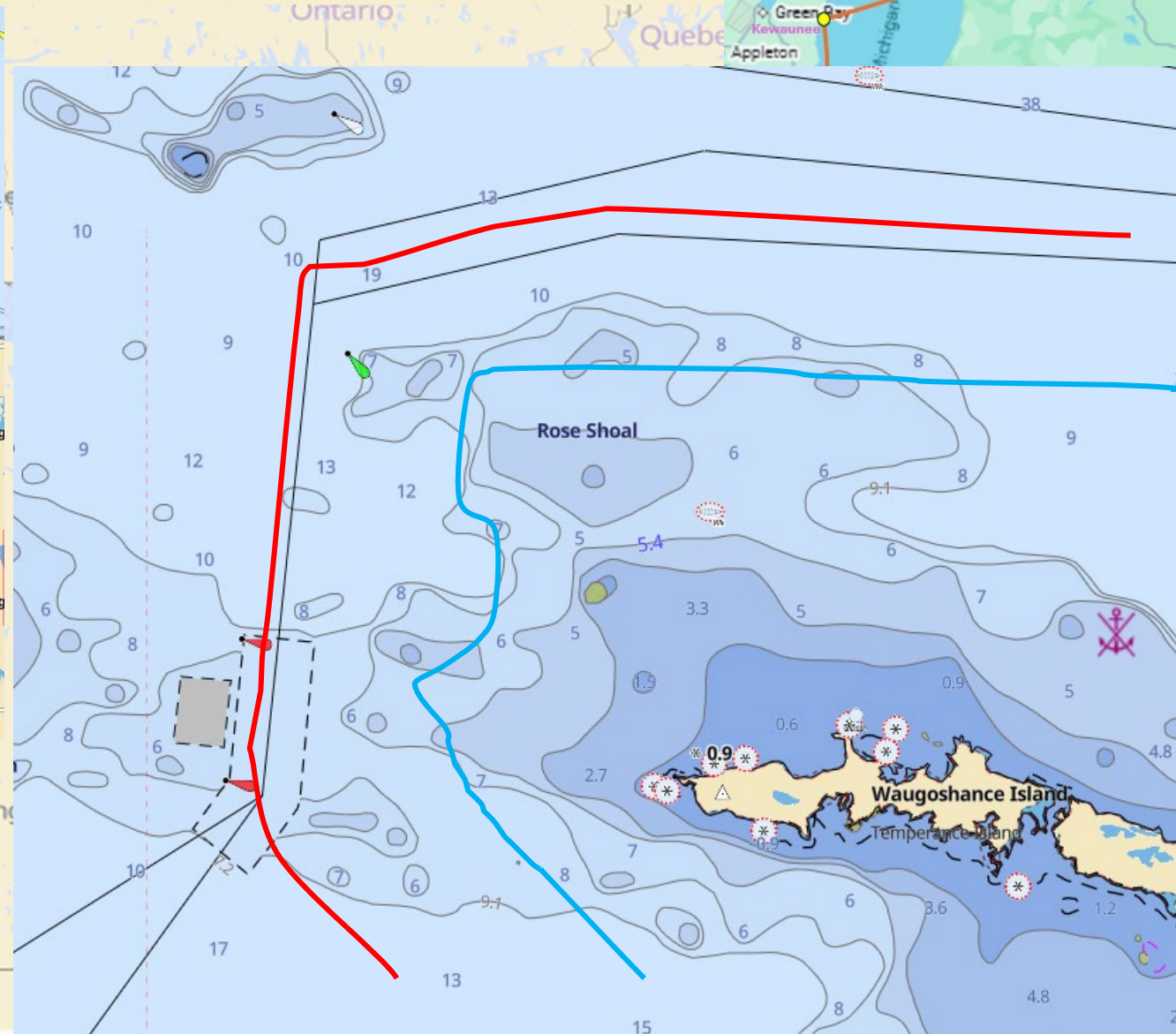
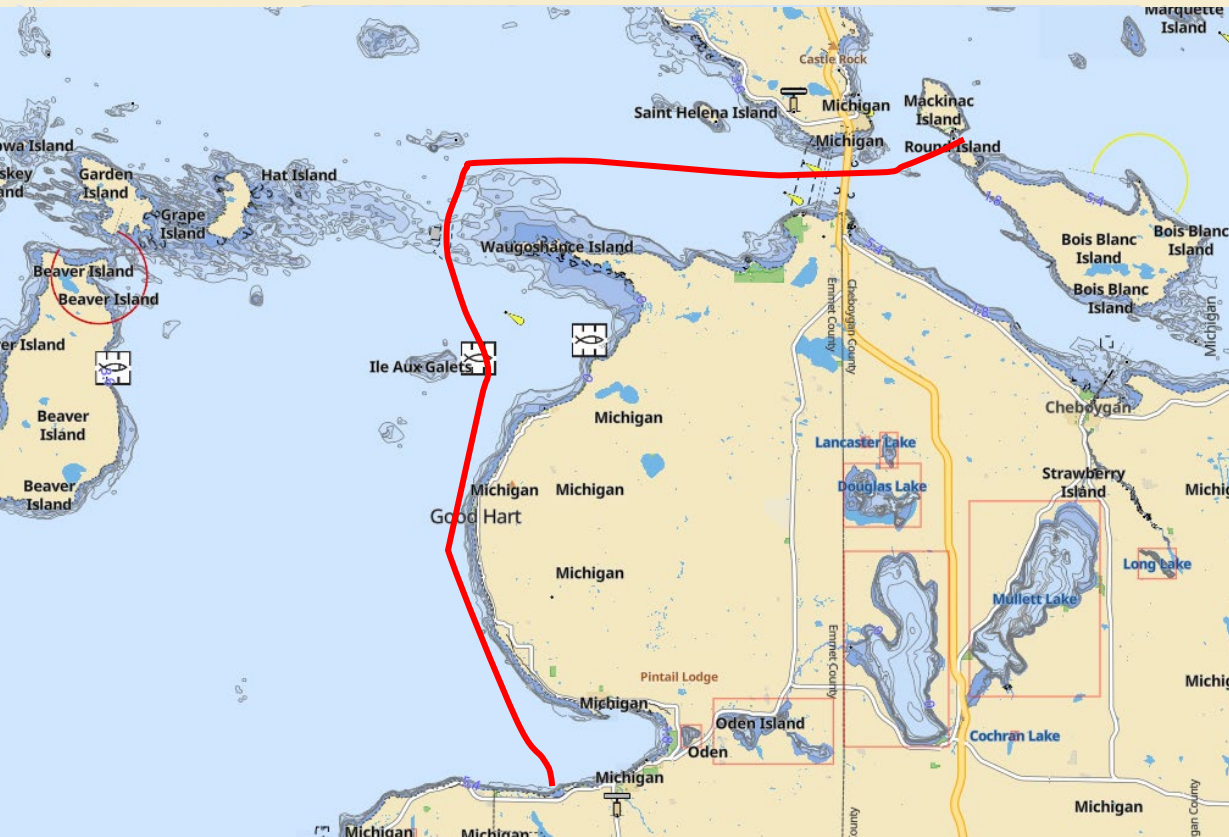
Services Available:

South: Pump-out, 30/50amp service, water, ice, showers, laundry, grills. No fuel, deeper draft

North: Fuel (G/D, repairs). Less than 6ft draft

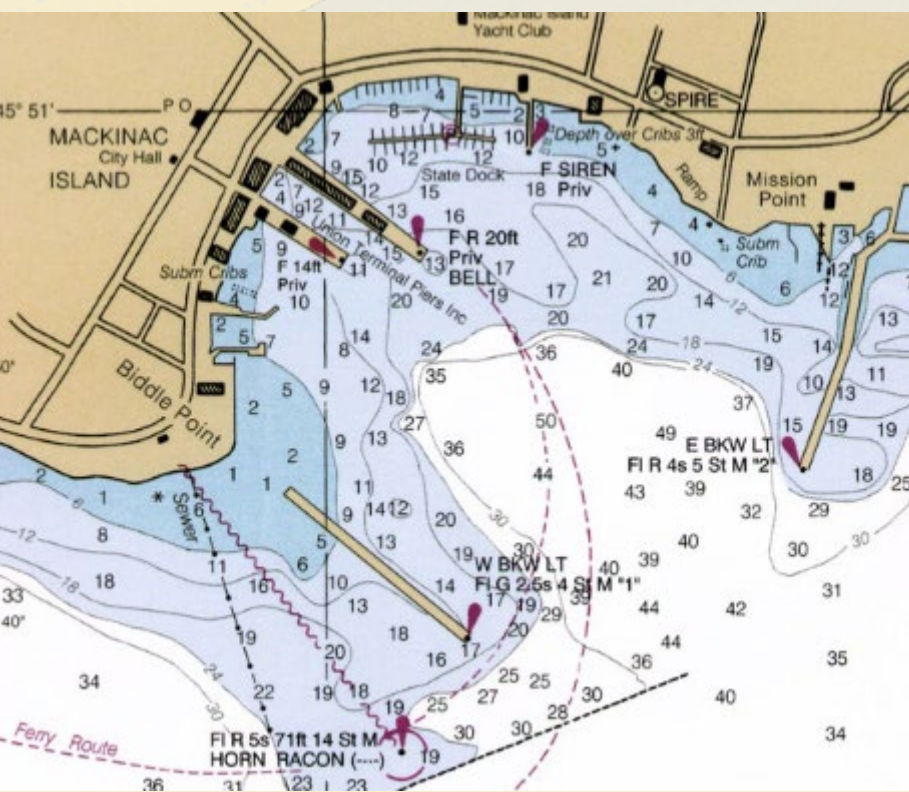


6/22: Bay Harbor to Mackinac Island (H-77) – 48 nm - Navigating Grays Reef -



6/22: Beaver Island to Mackinac Island (H-77) – 40 nm

Welcome to the Mackinac Island Rally!



Mackinac Island State Harbor

Services:
30/50amp service, water, pump-out, bathroom/showers, laundry, restaurants, hardware, medical services, airport and ferry to mainland. No fuel.

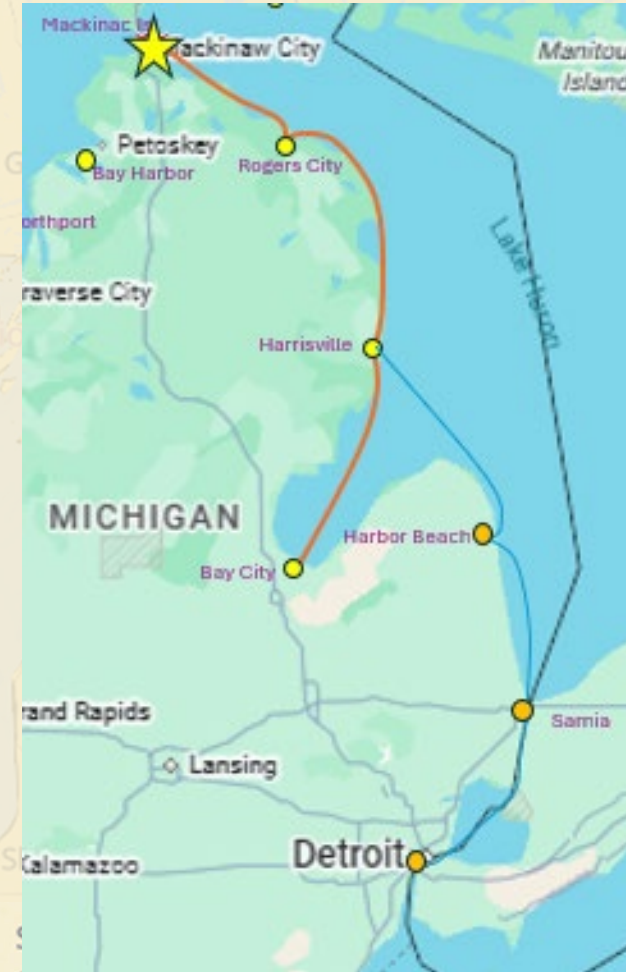
Segment 2: Lake Huron Sarnia/Bay City to Mackinac Island

Commodore Joe McKeown

Preliminary Route and Dates

6/17: Detroit – Sarnia	50 nm
6/18: Sarnia – Harbor Beach	55 nm
6/19: Harbor Beach – Harrisville	57 nm
Bay City# – Harrisville	69 nm
6/20: Harrisville – Rogers City#	61 nm
6/21: ---Layday / Weather Day ---	
6/22: Rogers City# – Mackinac Island	43 nm

6/22 – 6/25: Mackinac Island Rally

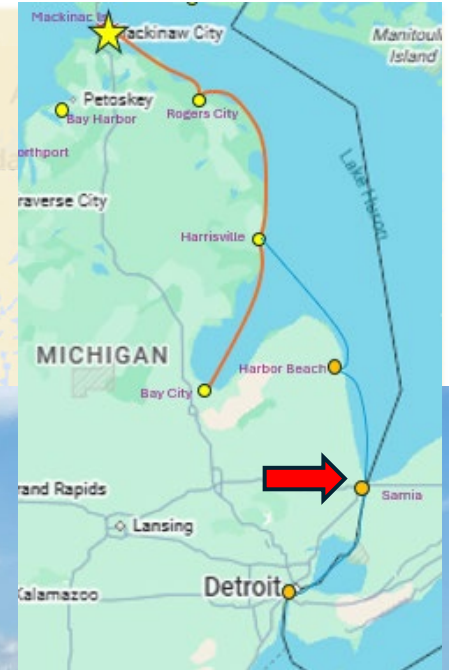
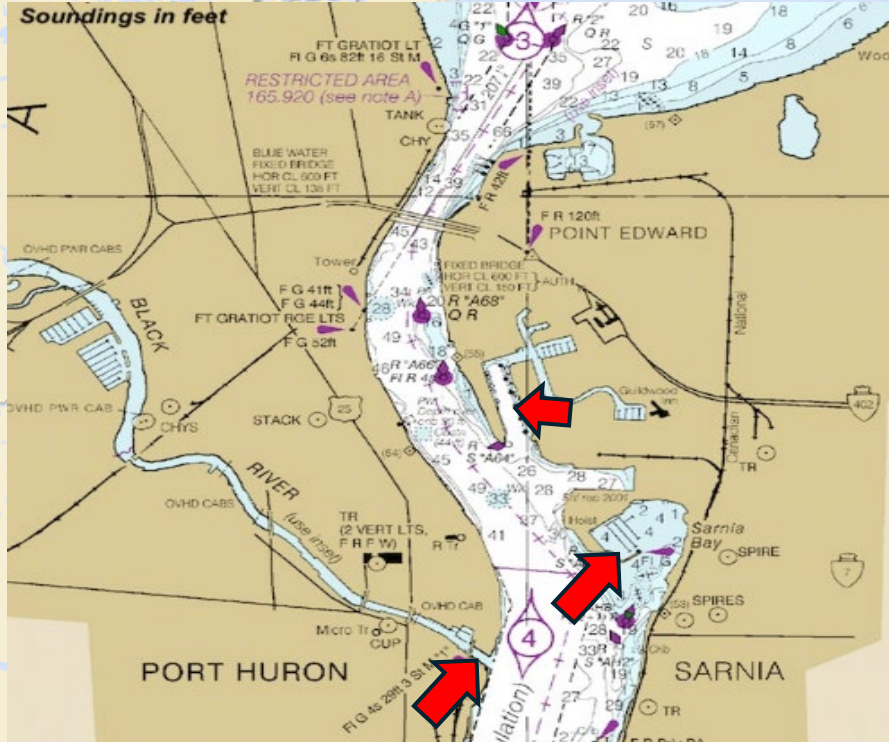


***See links for all Harbor Report at end of presentation**

#Denotes harbor with a GLCC Port Captain

6/17: Detroit – Sarnia# (D-3) - 50 nm

#Port Captain:
Commodore Joe McKeown



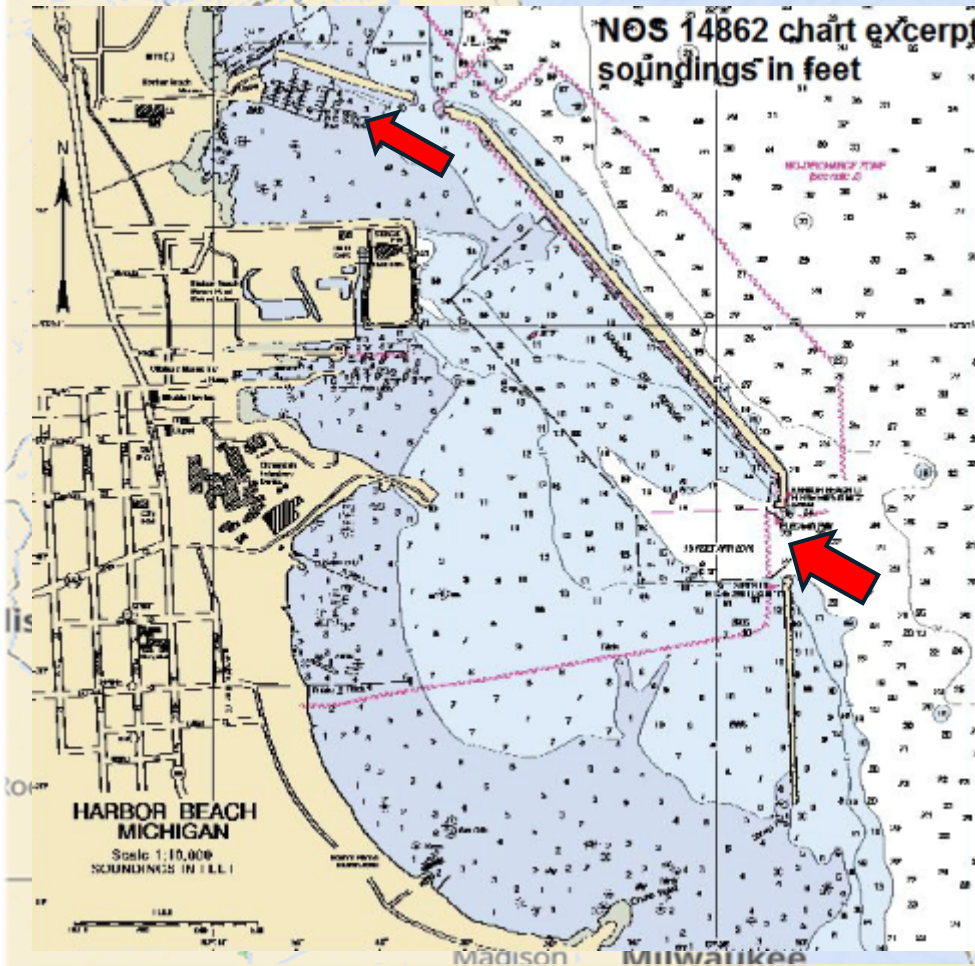
Sarnia Bay Marina and Bridgeview- Canadian Marinas
Services: Fuel (G/D), restroom/showers, laundry, 30-amp with some
50-amp service, water, swimming pool, shuttle to downtown,
restaurant

Port Huron- James C. Acheson Marina

US Marina Black River between 7th and 10th Street Bridges, open on
schedule.



6/18: Sarnia - Harbor Beach (H-56) - 55 nm

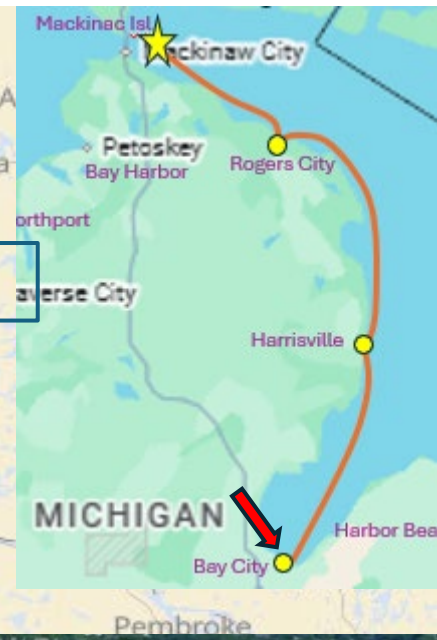


Harbor Beach Marina

Services: Fuel (G/D), pump-out, restroom/showers, WiFi., Shuttle to downtown for restaurants, grocery, drugstore, hardware, theatre, library and laundromat

6/19: Bay City# (H-61) – Starting Point

#Port Captains: Brian & Sharon Jacobs

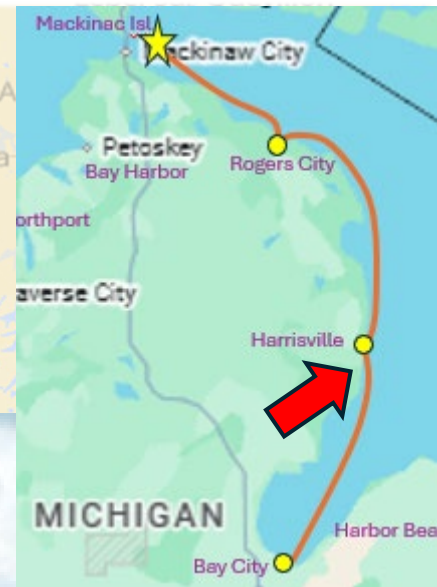


Bay Harbor Marina

Services: Fuel (G/D), pump-out, restroom/showers, swimming pool, full service mechanical shop with 60 ton Travelift.



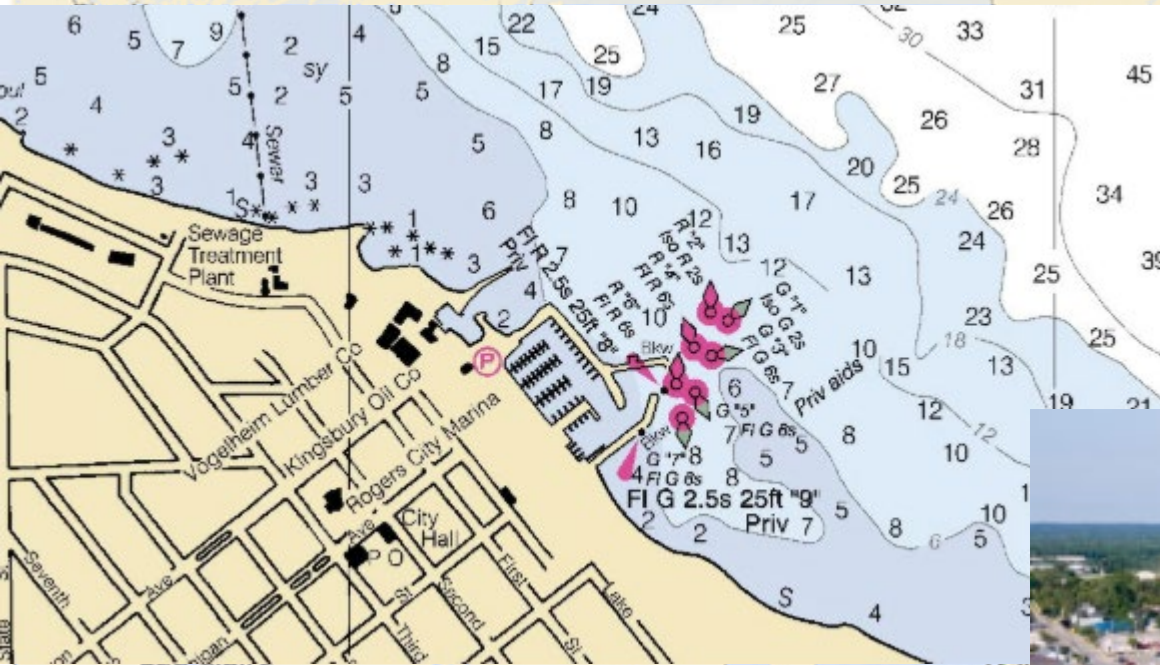
6/19: Harbor Beach to Harrisville(H-64.5) -56 nm Bay City to Harrisville - 57 nm



Harrisville Harbor marina
Services available:
Fuel (G/D), 30-amp service, pump-out, laundry, restrooms/showers, complimentary bikes, restaurants, shuttle service, hardware stores

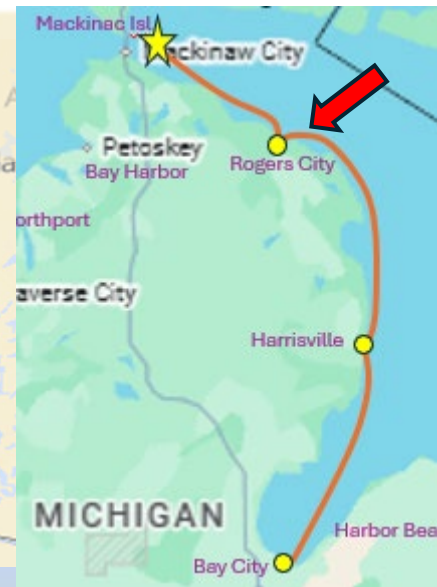


6/20: Harrisville to Rogers City# (H-73) – 61 nm



#Port Captain: Beach Hall

Rogers City was the site of the 2015 GLCC Rendezvous and will likely be a Rendezvous site in the near future.



Rogers City Marina

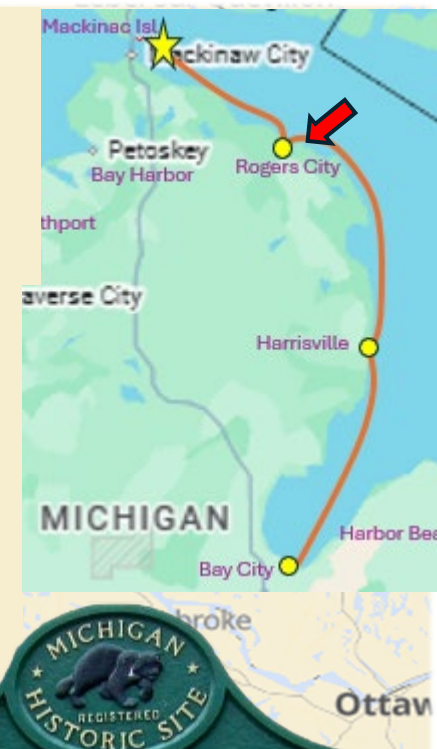
Services: Fuel (G/D), oil, pump-out, ice, 30 and 50-amp service, excellent WiFi, showers, medical clinic, groceries, movie theatre, library and US Customs check-in.

GLCC members may receive a dockage discount – reach out to Dee McClure.

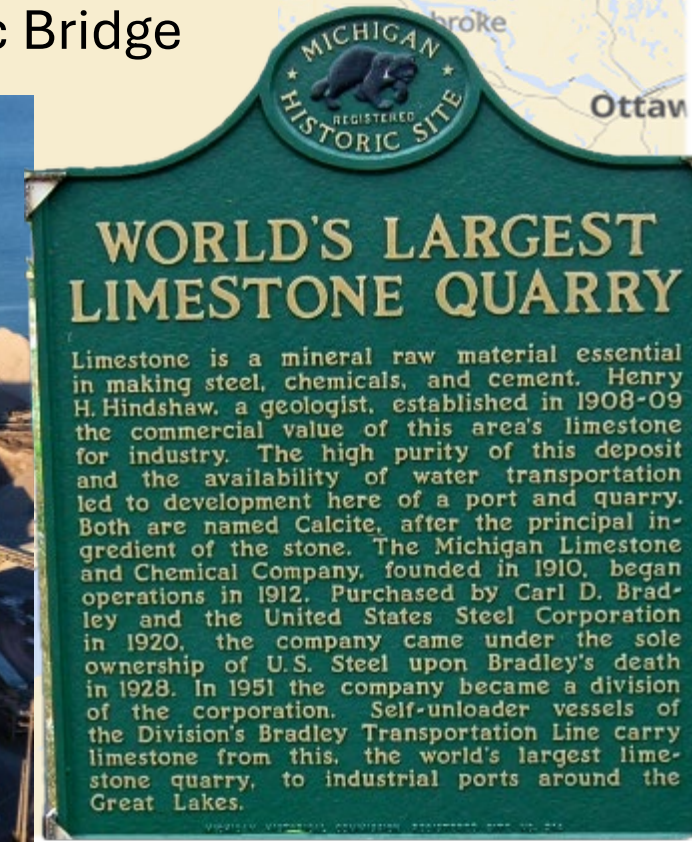


6/21: Lay day/Weather day in Rogers City (H-73)

Rogers City is well worth a lay day. Known as the Nautical City and Gateway to the North Channel.

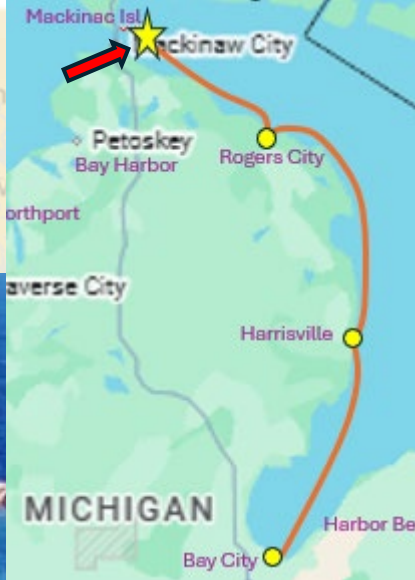
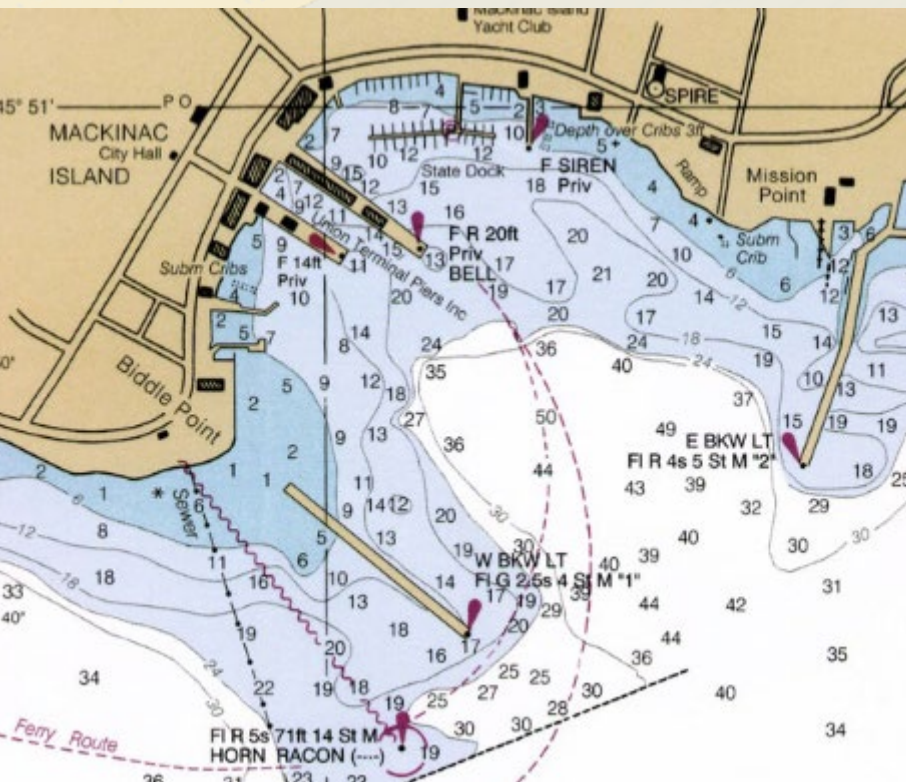


- Sunrise Trail connecting the City's Parks winding along the lake to the State Park and then to 40-mile Point Lighthouse
- Great Lakes Lore Maritime Museum and Presque Isle County Historical Museum
- Calcite Limestone quarry – the largest in the world and has been described as a “man made Grand Canyon” with much of it used to build the Mackinac Bridge and interstate highway system.



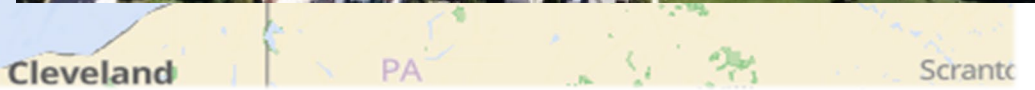
6/22: Rogers City to Mackinac Island (H-77) – 43 nm

Welcome to the Mackinac Island Rally!



Mackinac Island State Harbor

Services:
30/50amp service, water, pump out, restrooms/showers,
laundry, restaurants, hardware, medical services, airport and
ferry to mainland. No Fuel.



Mackinac Island Rally

June 22-25, 2026

Click [HERE](#) for full Schedule and Registration



Come join the fun! This 3-night, 2-day Rally will provide attendees time to explore the island, meet fellow GLCC members and participate in events, such as:

- Opening cocktail reception at Mission Point Resort (Cash Bar)
- Buffet dinner at Mackinac Island Yacht Club (BYOB)
- **Round Island Lighthouse exploration (bring your own picnic)**
- Opportunity to watch boats finishing the Great Lakes Singlehanded Society races from Chicago and Port Huron
- Scavenger hunt with historic twist
- Grand Hotel meet-up for drinks (Cash Bar)
- Discounted coupons for rental bikes to explore the Island
- ... and so much more

Segment 3: Mackinac Island to Sault Ste. Marie

Rear Commadore Rob Hillman



Option 1: Mackinac Island to the Soo 71 nm

**Option #2: Mackinac Isl. - Detour# 33 nm
Detour – Sault Ste. Marie 38 nm**

**Option #3 Mackinac Isl. - Harbor Island# 38nm
Harbor Isl# – Sault Ste. Marie 45nm**

**Option #4: Mackinac Isl. - Lime Island 41 nm
Lime Island - Sault Ste. Marie 30 nm**

**Option#5: Mackinac Isl. - East Neebish 56 nm
East Neebish – Sault Ste. Marie 15 nm**

***See links for all Harbor Report at end of presentation**

#Denotes GLCC Port Captain harbor

6/25: Options #2, 3 and 4 Mackinac Island to DeTour# (H-83), Harbor Island# (NC-2) or Lime Island (NC-09) – 34-40 nm



DeTour Marina: Fuel (G/D), pump-out, 30/50 amp service, water

Harbor Island: Wilderness anchorage, no services

Lime Island: Dock has 350 ft to tie up. No Services.

East Neebish: Anchor in St. Mary's River

#Port Captain:
DeTour: Dave & Cindy Obergefell
Harbor Isl: Bill & Sandi Matley

Option #5

Mackinac to East Neebish -56 nm

East Neebish to the Soo -15 nm



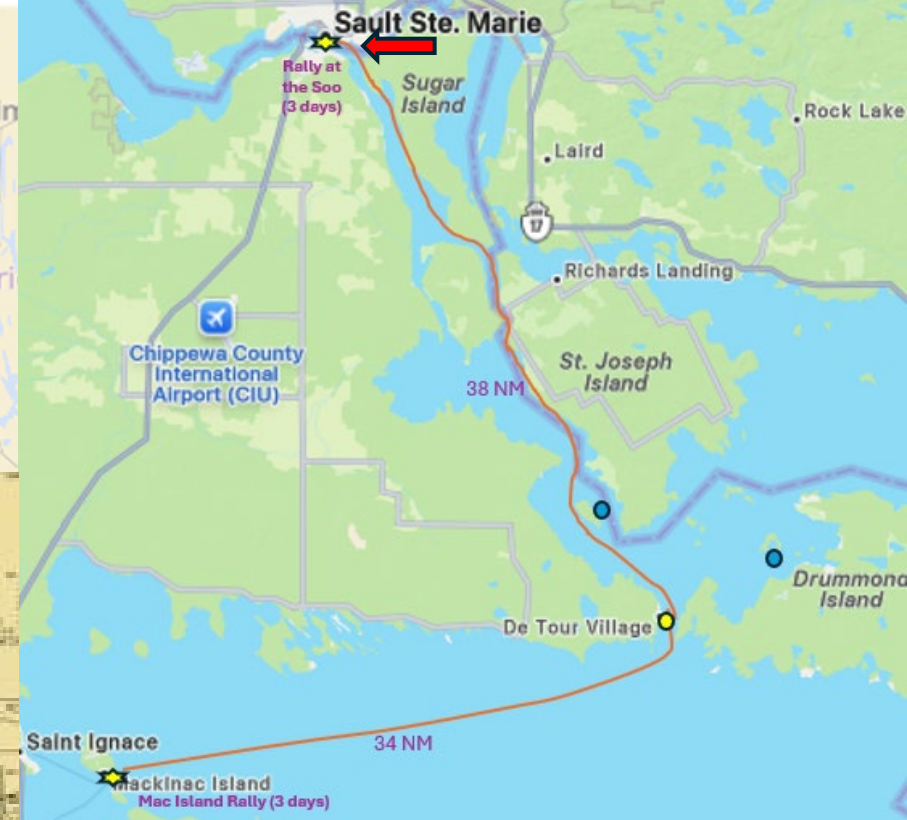
Transiting the St. Mary's River (NC-01)



6/26: DeTour, Harbor Island, Lime Island, East Neebish to Sault Ste Marie (S-230) - 15-45 nm

Welcome to the Rally at the Soo!

[Click HERE to Register](#)



George Kemp Marina:

Services: Fuel, pump out, 30/50amp service, water, Bath/Showers, restaurants, grills, ice, complimentary morning coffee, courtesy bicycles





Rally at the Soo

Friday- Saturday- Sunday
June 26 – 28th

Friday June 26th

1:00PM – 3:00PM

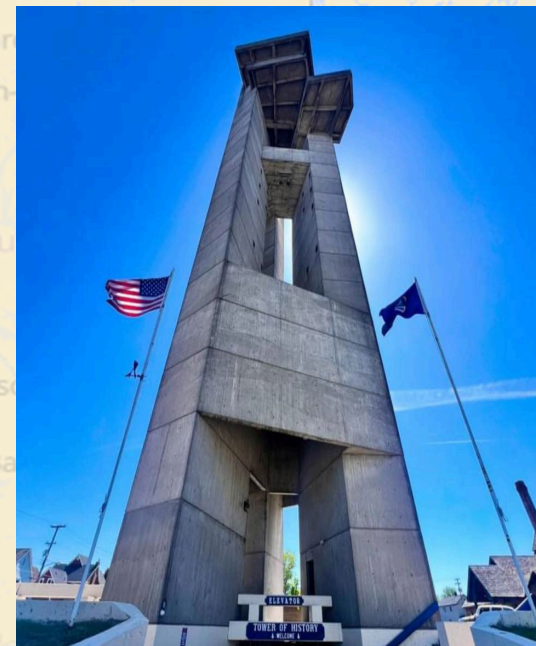
**Lake Superior State University Center for
Freshwater Research & Education Open
House**

**Food Trucks, Arts, Crafts & Family Fun
Fair** — City Hall lawn a short walk from the
marina

Until 6:00 PM

Soo Locks Visitor Center — exhibits,
history, and observation areas.

Soo Locks Canal Park & Observation Deck
freighter watching and general visits.



6:00 PM – 9:00 PM

**GLCC Reception
and Welcome**

Join your fellow GLCC
Cruisers at the top of
the 210 ft Tower of
History observation
lounge for cocktails
and hors d'oeuvres

Soo Locks Engineers Day

**9:00 AM United States
Coast Guard Open House**

— Walk 200 ft from the
marina to see displays and
talk with CG personnel

**11:00 AM Visit Soo Locks
Park, Observation Deck
and Visitor Center** for
viewing freighters and
learning about how the locks
work.

Rally at the Soo

June 26 – 28th

Saturday June 27th

3:00PM – 5:00PM

Tour Museum Ship Valley Camp



GLCC boaters will gather at this retired Lake Freighter, located right next to the marina, for a guided tour of this time capsule of history. (You will need to buy a ticket to join this tour)



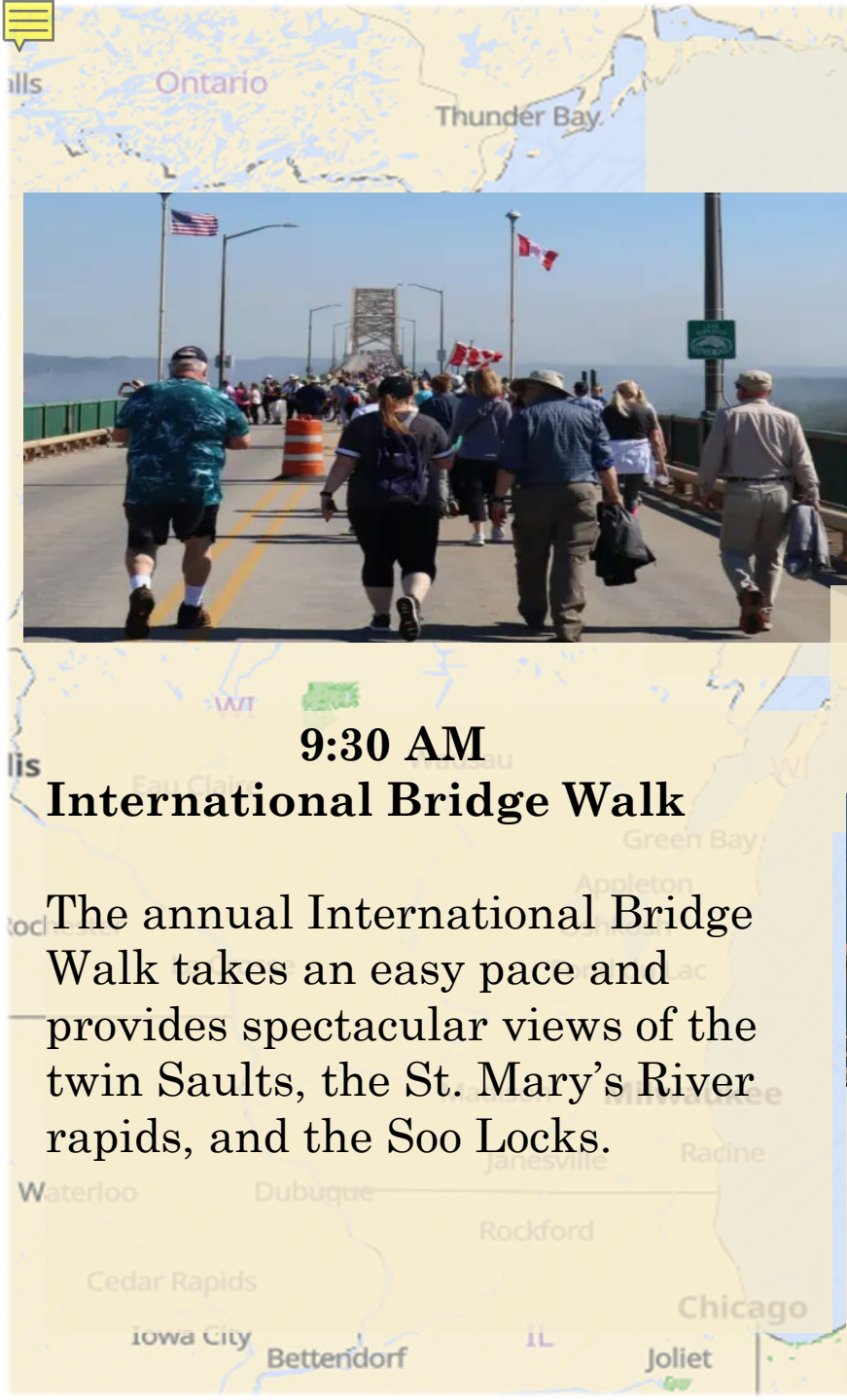
6:30PM – 10:00PM
Dinner at Black Rock Bar & Grill

We will meet in the marina parking lot and travel by shuttle bus to the Black Rock Bar & Grill. This is an award-winning steakhouse specializing in steaks served and then cooked to perfection by you on a 755° volcanic sizzling rock. (Not included in registration fee. Food, drinks and gambling are paid individually)

9:30 AM

International Bridge Walk

The annual International Bridge Walk takes an easy pace and provides spectacular views of the twin Saults, the St. Mary's River rapids, and the Soo Locks.



Rally at the Soo

June 26 – 28th

[Click HERE to Register for the Rally](#)

Sunday June 28th

8:00AM

Breakfast at Penny's Kitchen
(not included in registration fee)

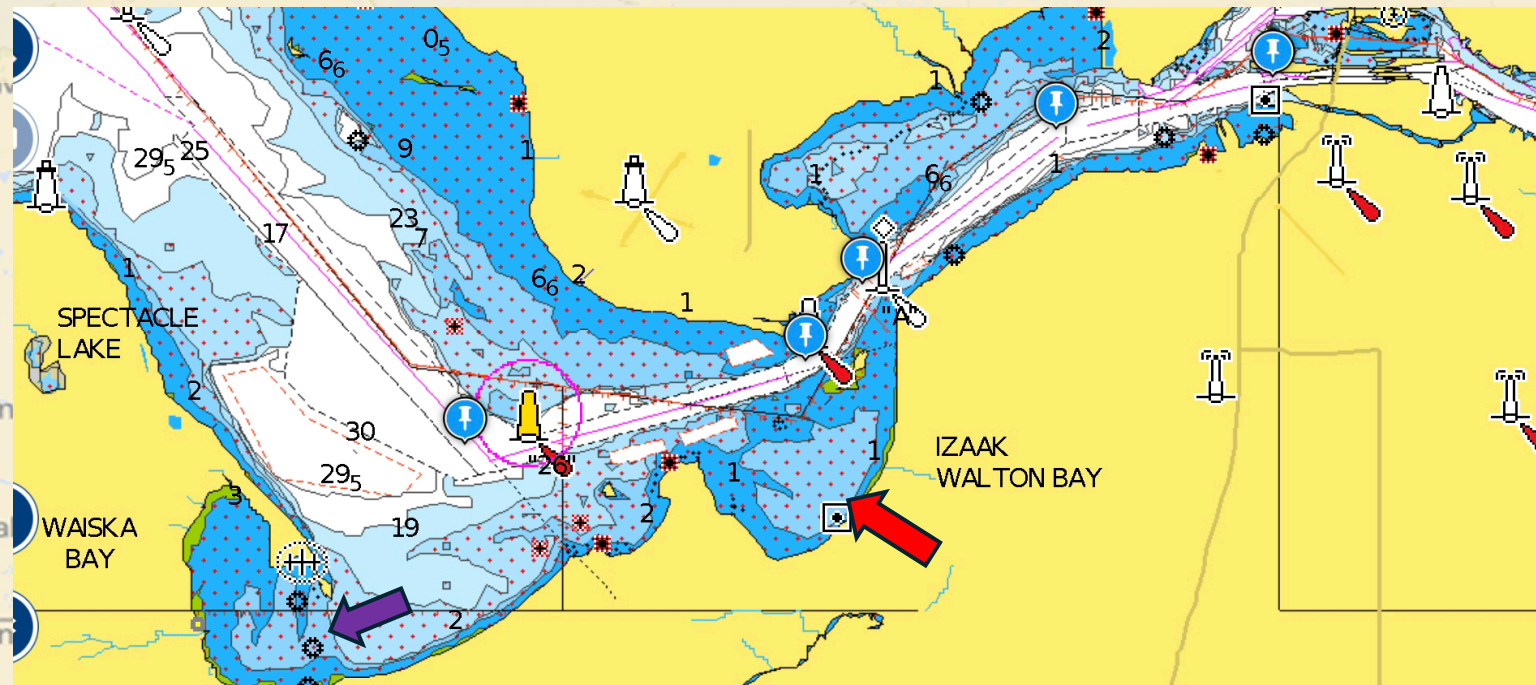


10:00AM – 1:00PM

- Church Services
- Provision for the journey

1:00PM

Transit the Canadian or American Lock
Anchor in Isaak Walton Bay (Upper St. Mary's River)



6/28: Soo Locks (S-1 and S-230)

← Denotes Canadian Locks - open 0900-2100
← Denotes US Locks - open 24/7



Segment 4: Lake Superior Sault Ste. Marie to Duluth/Superior

Rear Commodore Nelson Stone



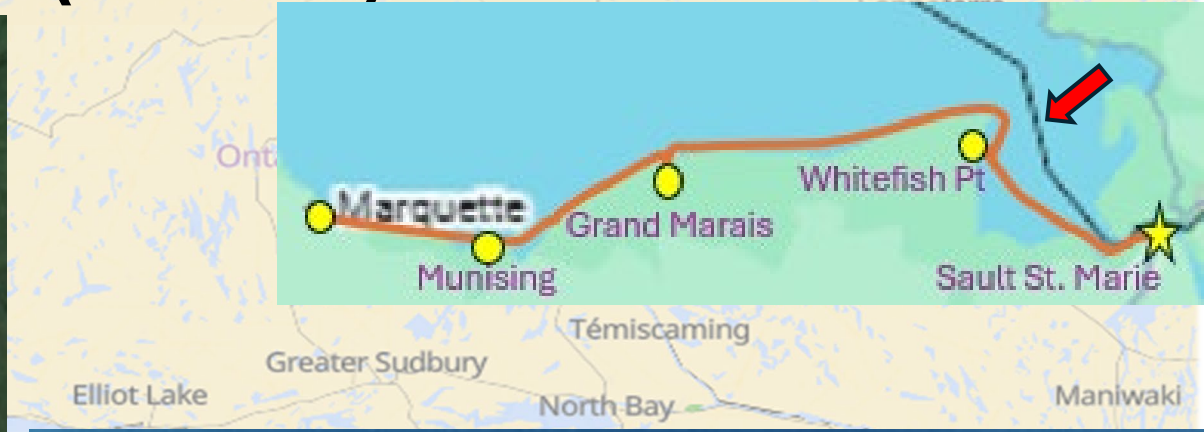
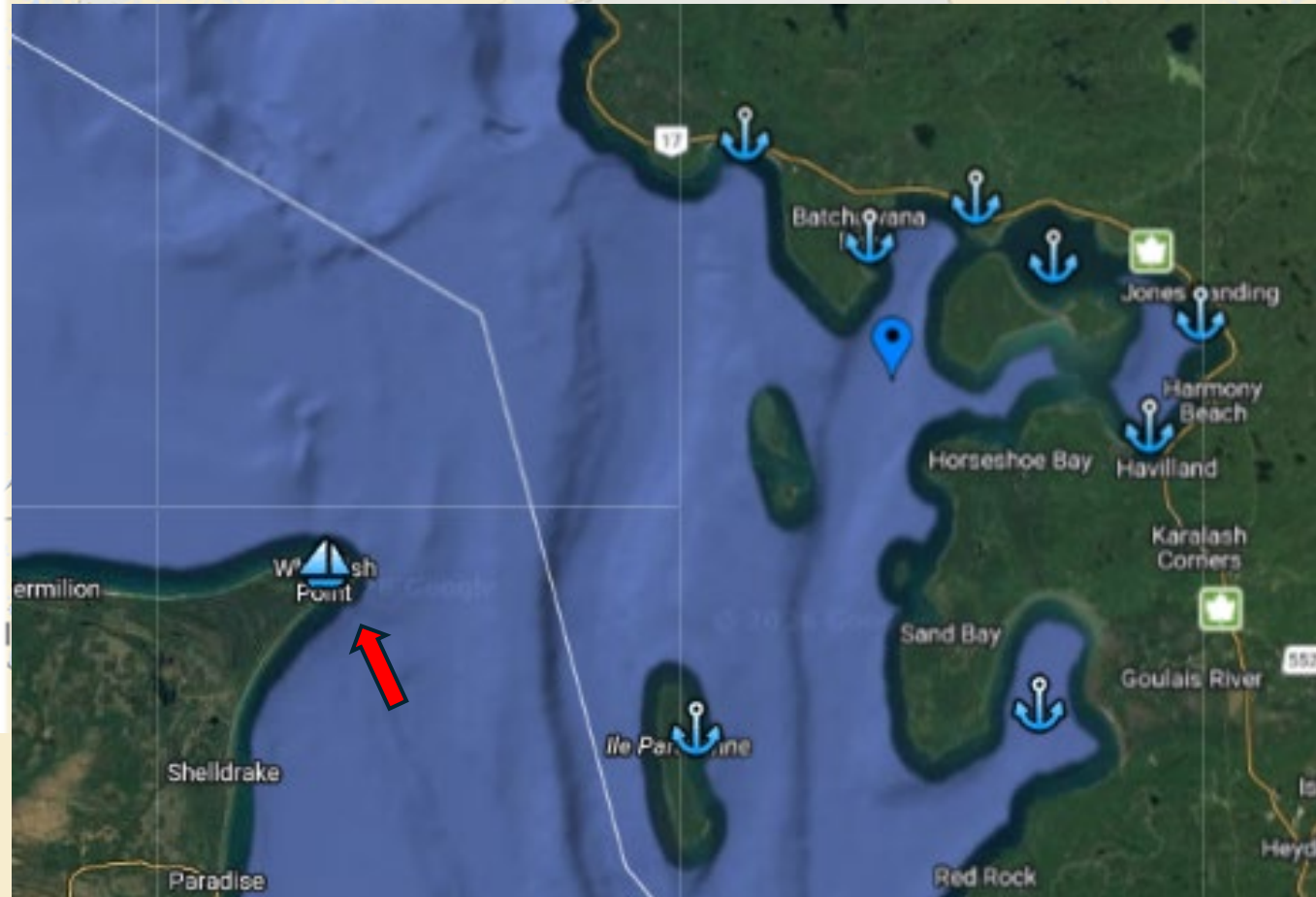
Preliminary Ideas for Stops and Dates

6/29: Sault St. Marie – Whitefish Point	35 nm	7/6: -- Lay day/Weather day in Apostle Isl.	
6/30: Whitefish Point – Grand Marais	45 nm	7/7: --Lay day/Weather day in Apostle Isl.	
7/1: Grand Marais – Munising	36 nm	7/8: Stockton Island# – Cornucopia#	29 nm
7/2: Munising – Marquette	35 nm	7/9: Cornucopia# – Superior	41 nm
7/3: Marquette – Houghton	69 nm	7/10 – 7/14: Rendezvous at Superior	
7/4: Houghton – Ontonagon	46 nm	Post Rendezvous: Thunder Bay and Isle Royale	
7/5: Ontonagon – Stockton Island#	52 nm		

***See links for all Harbor Report at end of presentation**

#Denotes GLCC Port Captain harbor

6/29: Sault Ste. Marie to Whitefish (S-220.6) – 35 nm

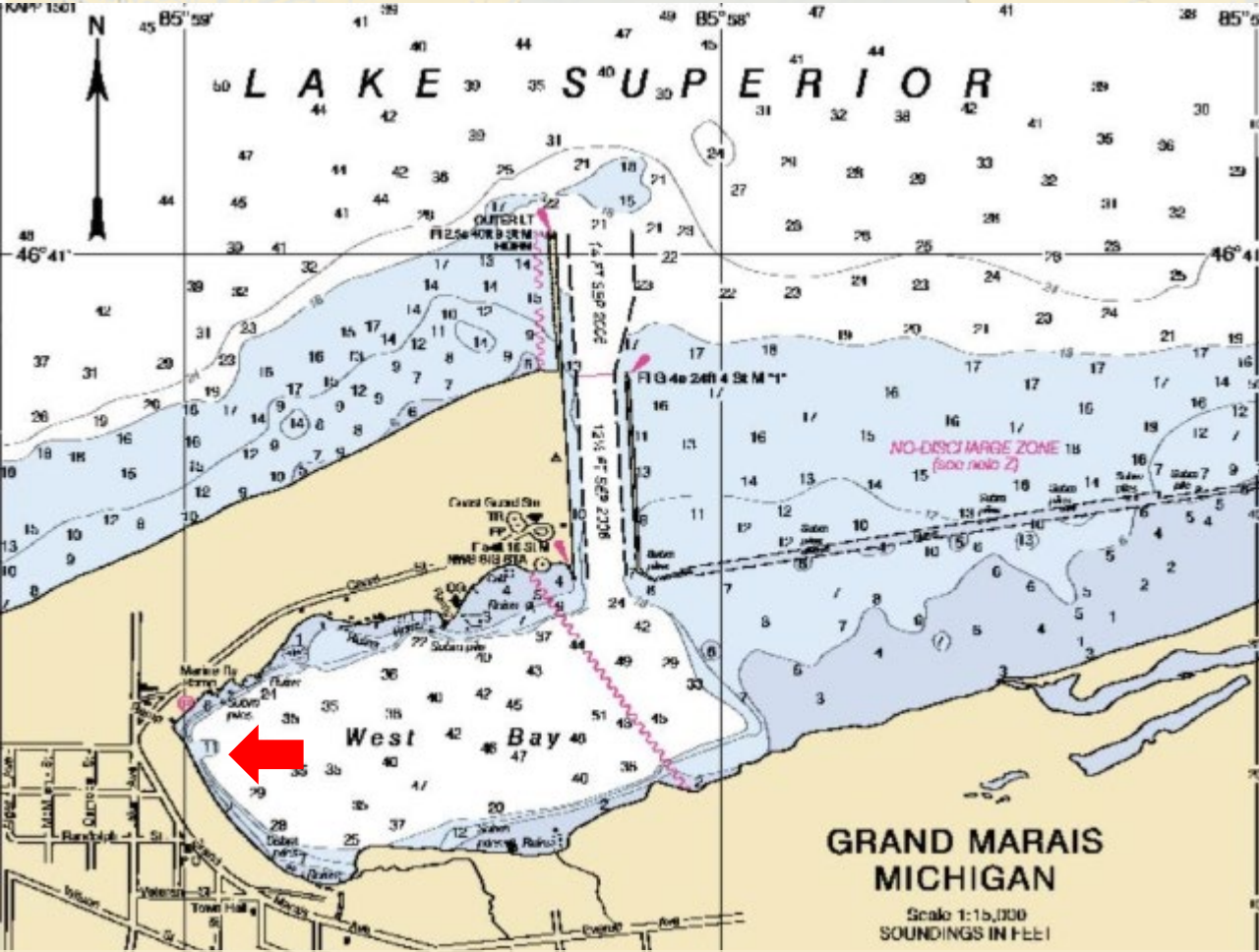


Whitefish Point Marina (harbor of refuge)
Services: First Come/First Serve – no reservations, no services, no trash receptacles

Wall for docking

Whitefish Point

6/30: Whitefish Point to Grand Marais (S-220) – 45 nm

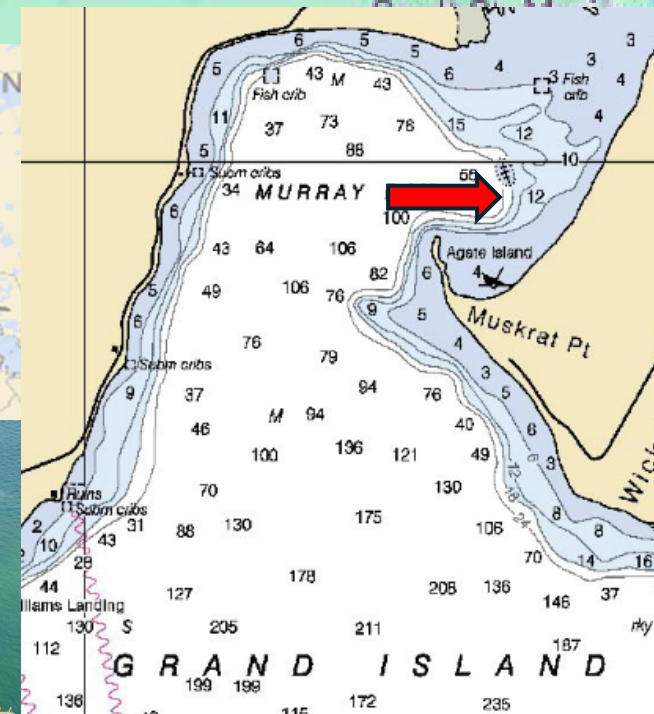
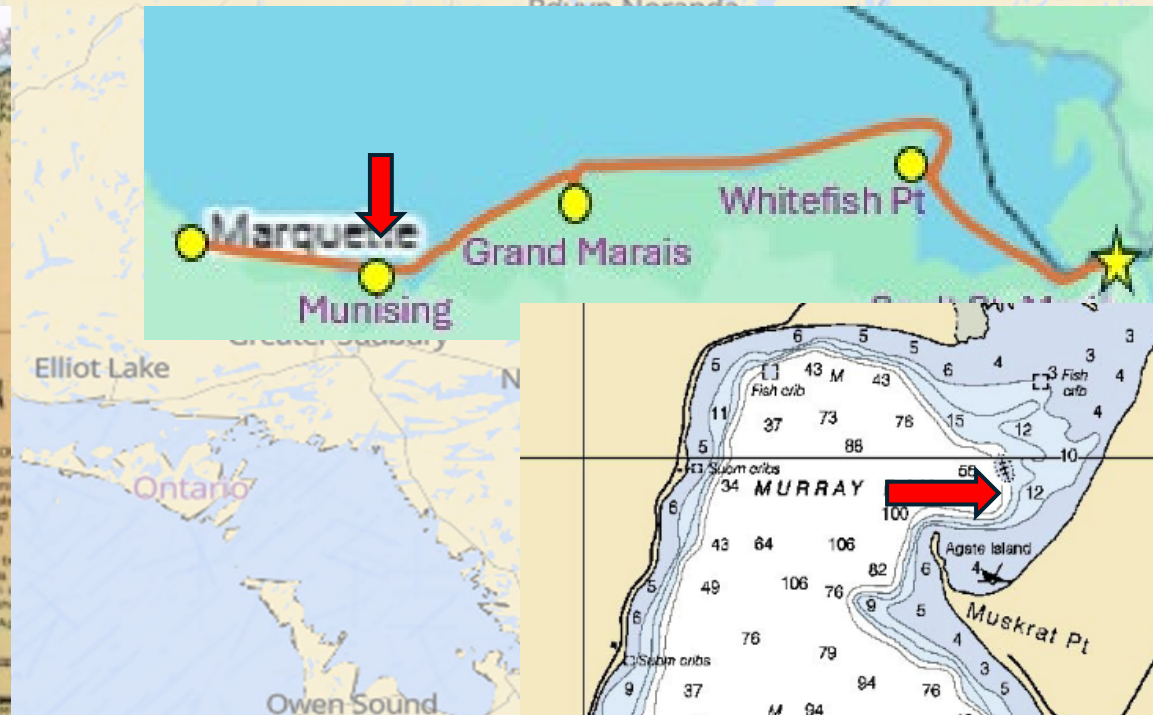


Burt Township Marina (harbor of refuge):
Services: 180' breakwall, Fuel (G/D), pump-out, new restrooms/shower, laundry, restaurants. Anchorage – in 20 – 35' of water (see red arrow)
Potential slip hold for GLCC members: Check in with Dee McClure.

Enroute to Munising - Photo Opp! - Pictured Rocks National Lakeshore



7/1: Grand Marais to Munising (S-281) – 36 nm

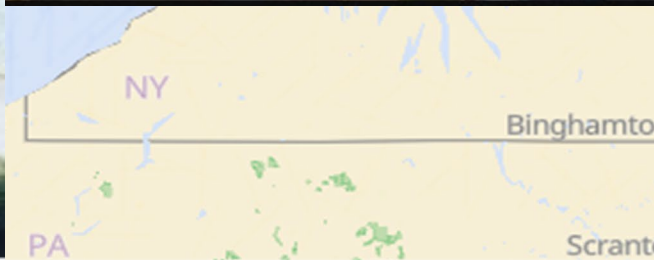
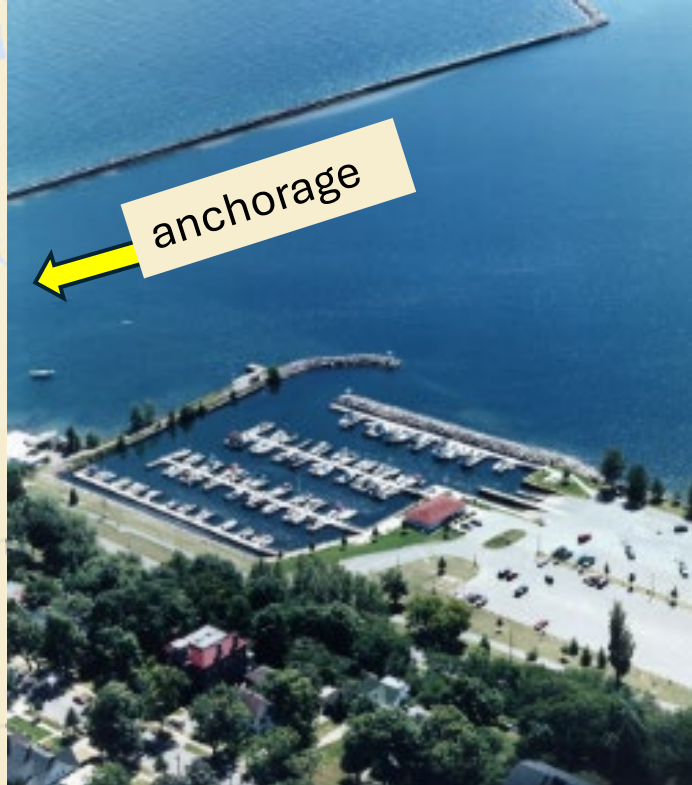
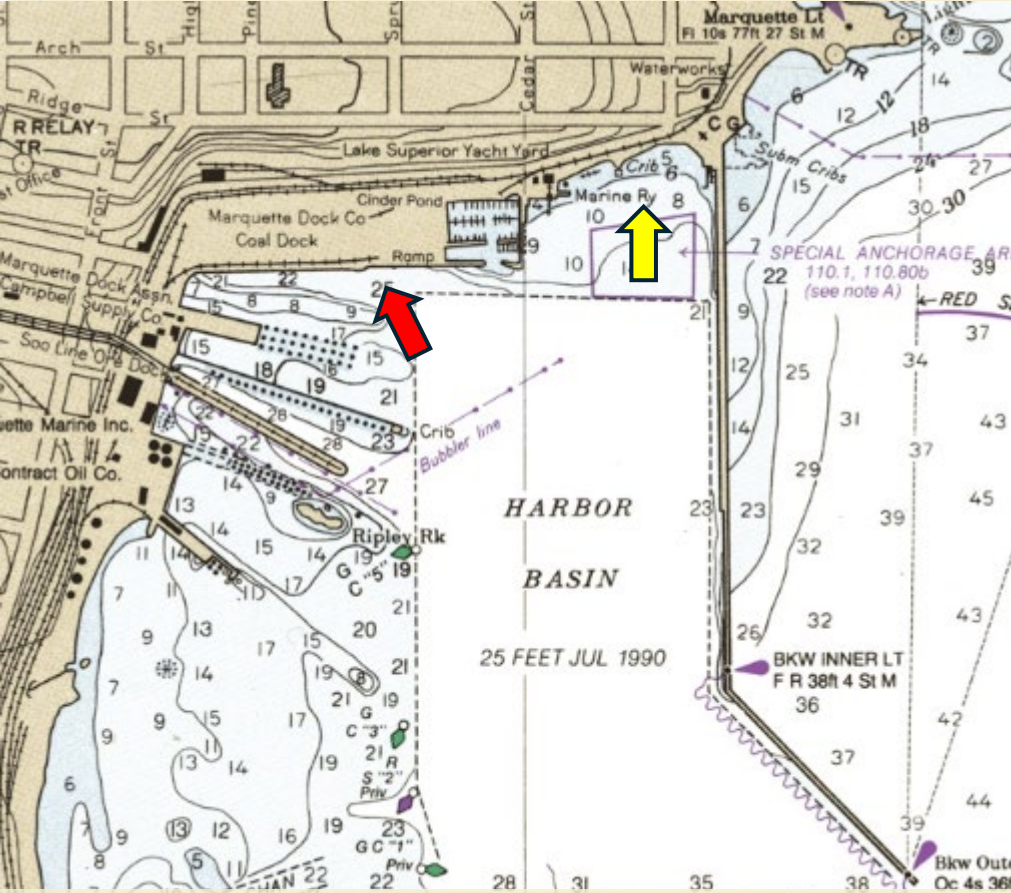


Munising Bayshore Marina:

Services: Fuel (Gas), 30/50amp service, pump-out, water, bath/showers, laundry, grocery, restaurants, ice (in town), Pictured Rocks tour ferries. Slip holds have been arranged for GLCC members. Reach out to Dee McClure for slip code.

Anchorage available in Murray Bay (S-219) on Grand Island

7/2: Munising to Marquette (S-217) – 35 nm



Cinder Pond Marina:

Services: Fuel (G/D), pump-out, ice, 30/50 amp electric, water, restroom/showers, grills, laundry, restaurants. First Come/First Serve at 850ft wall (red arrows). Good anchorage also available just inside the mooring field as noted by yellow arrows.

7/3: Marquette to Houghton/Hancock (S-198) – 69 nm



Houghton City Docks (south shore):

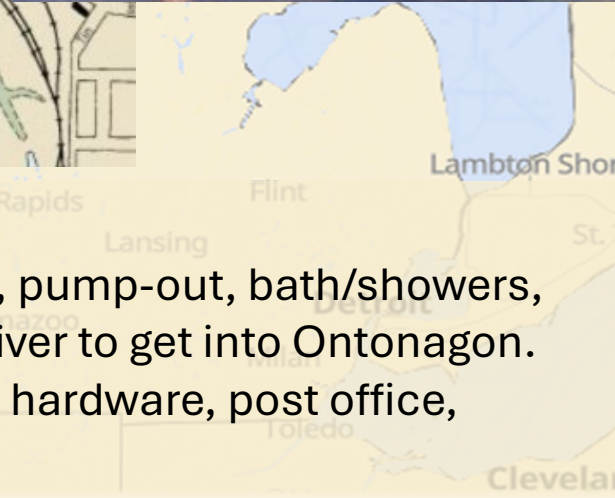
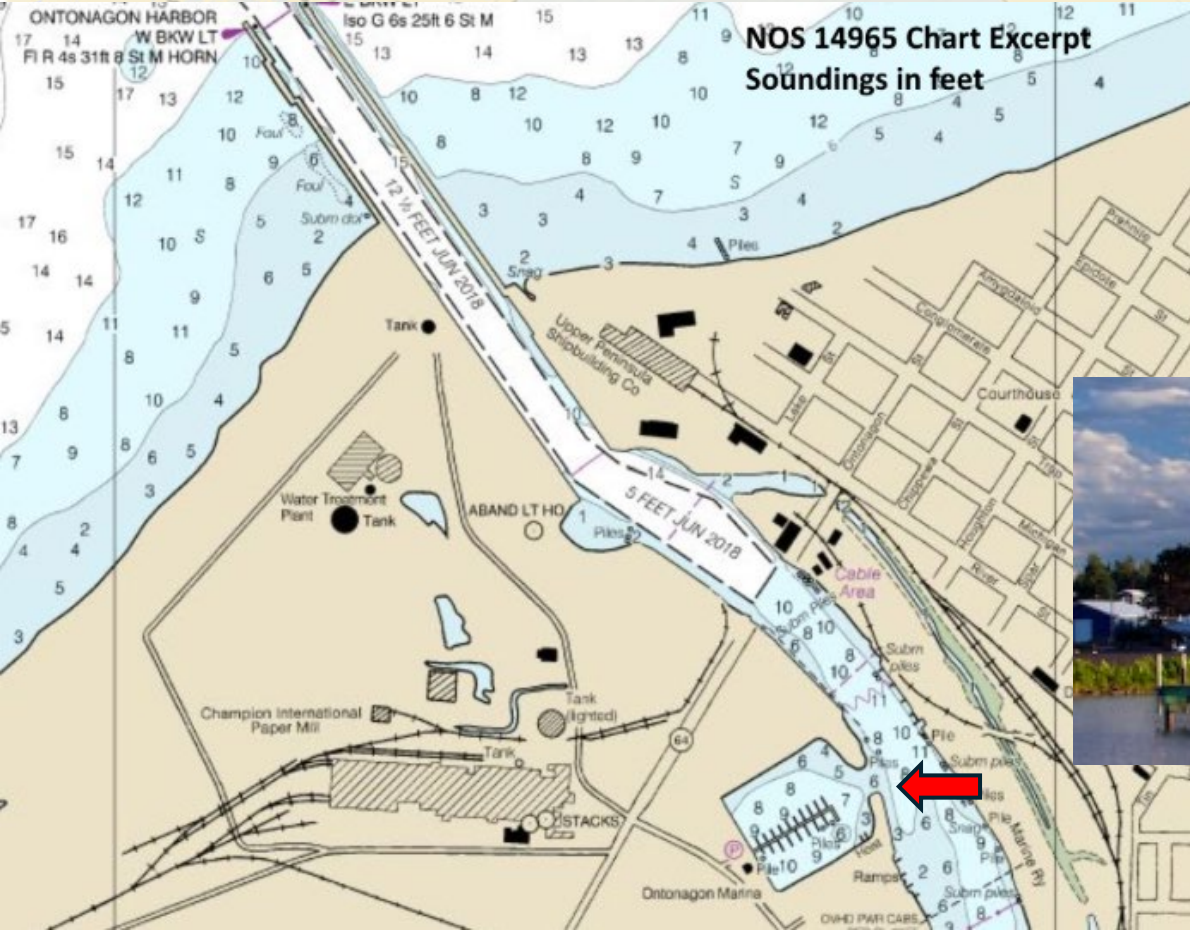
Services: first come/first serve. 500ft of dock with 30/50amp service, 1,200 feet of dock (on west side of bridge) has no electrical with no fee. Restaurants, public library and public toilets fairly easy walk from wall.

Houghton County Marina (north shore):

Services: Fuel (G/D), pump-out, ice, water, 110/220 volt power, bathrooms/showers, laundry, car rental, limited transient docking. This marina can be significantly impacted by crosswinds and currents at fuel dock.



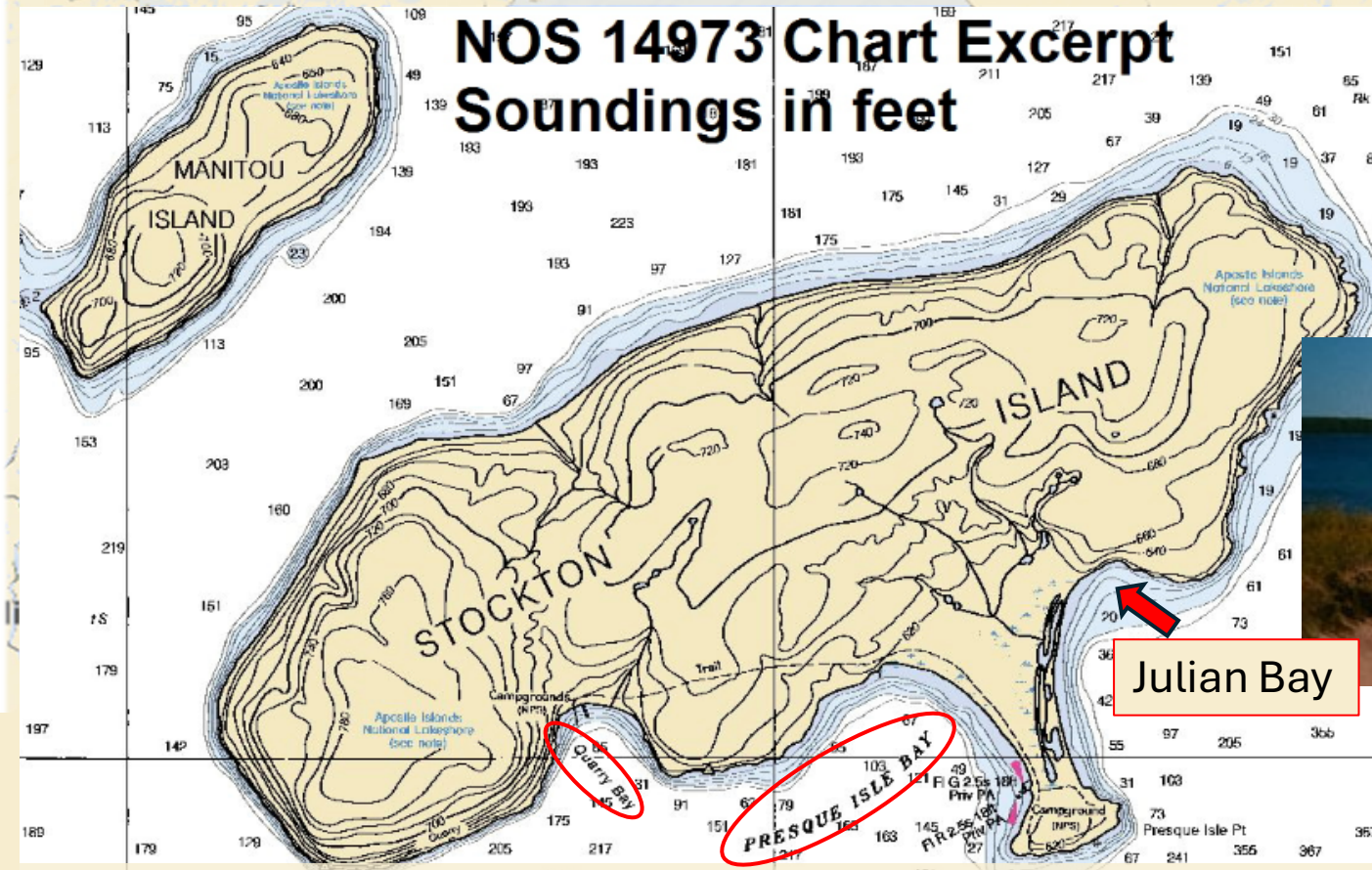
7/4: Houghton/Hancock to Ontonagon (S-198) -46 nm



Ontonagon Municipal Marina (small town):
Services: Fuel (Gas), water, fixed docks, electricity, pump-out, bath/showers, 30-ton Travelift, limited dock staff. Dinghy across river to get into Ontonagon.
1.5 miles from marina: grocery, pharmacy, laundry, hardware, post office, restaurants, medical/hospital.

7/5: Ontonagon to Stockton Island# (S-191.5) – 52 nm

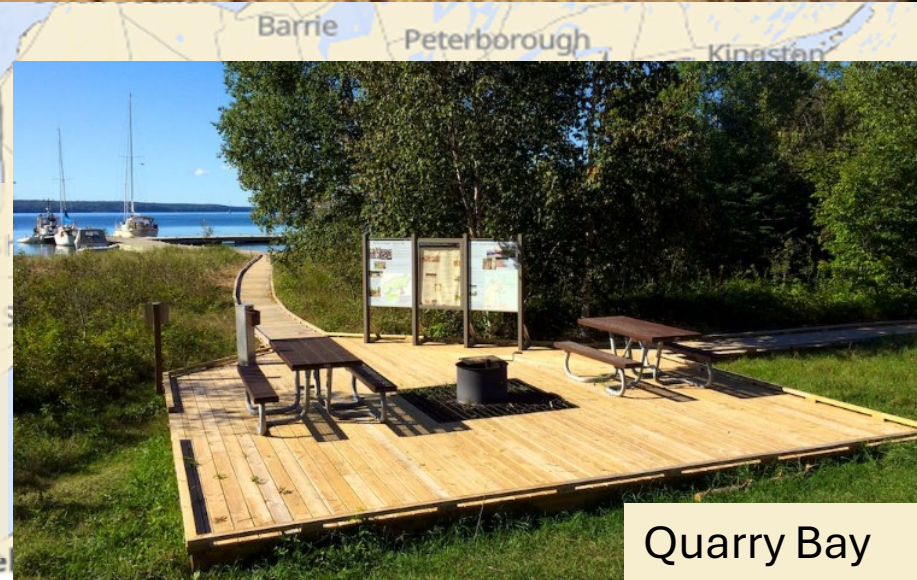
NOS 14973 Chart Excerpt
Soundings in feet



#Port Captains: Niels And Vicki Jensen



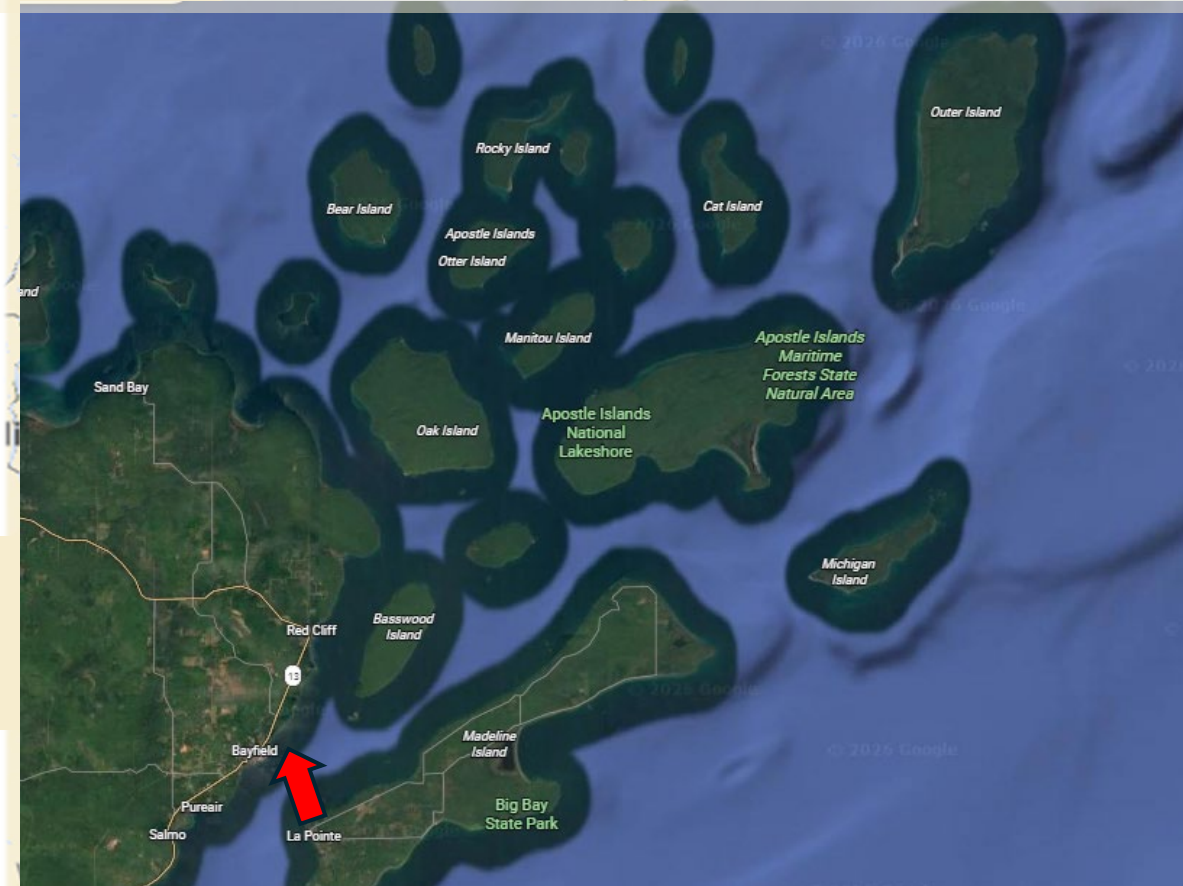
Julian Bay



Quarry Bay

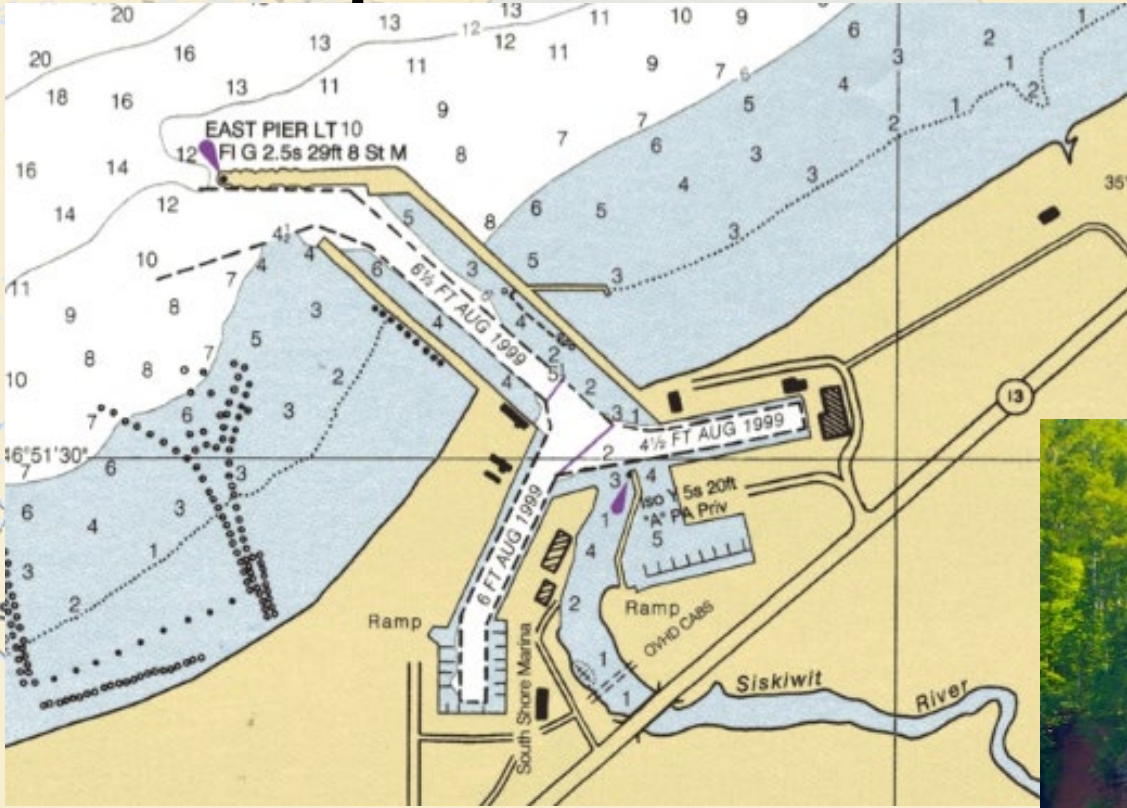
Stockton Island: In Presque Isle Bay, there are 2 docks - South Dock and North dock available on first come, first serve basis with small fee to NPS. There is a small pier at Quarry Bay with excursion and NPS boats having priority. Based on wind conditions, there are several good anchorages – Julian Bay, Quarry Bay and Presque Isle Bay.

7/6: Apostle Islands – Lay day/ Weather Day
7/7: Apostle Islands – Lay day/Weather Day
So many places to explore!



Bayfield is a small city with good provisioning opportunities. The Bayfield Marina offers Fuel (G/D), water, pump-out, 30 and 50-amp electrical, water, ice, WiFi, restrooms/showers, 30-ton Travelift. In town: restaurants, hospital, groceries, banking hardware

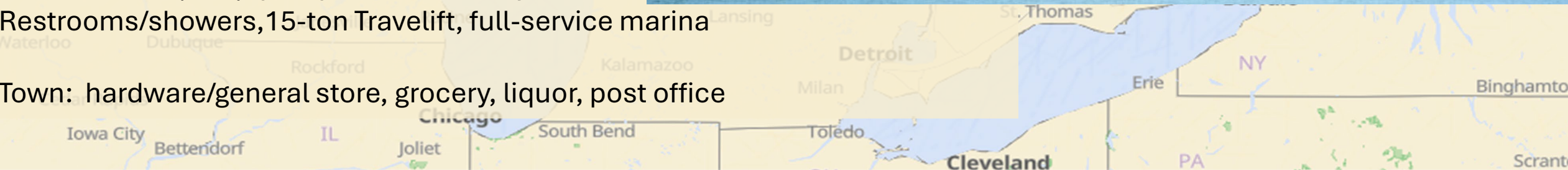
7/8: Apostle Islands to Cornucopia# (S-190) – 29 +/- nm



#Port Captains: Gregg Haug and Kimberly Kramer



Siskiwit Bay Marina:
Service: Fuel (G/D), pump-out, electricity,
Restrooms/showers, 15-ton Travelift, full-service marina
Town: hardware/general store, grocery, liquor, post office

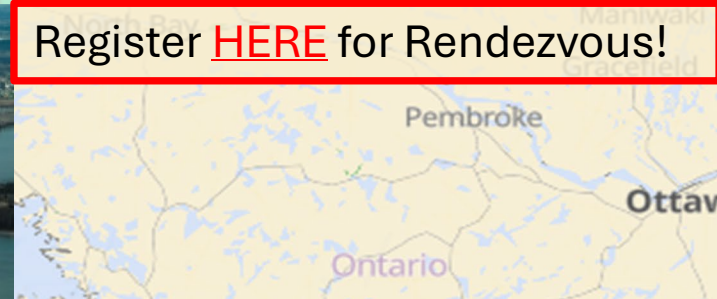


7/9: Cornucopia to Duluth/Superior (S-187) – 41 nm

Welcome to the 2026 Rendezvous!



Register [HERE](#) for Rendezvous!



Barker's Island Marina:

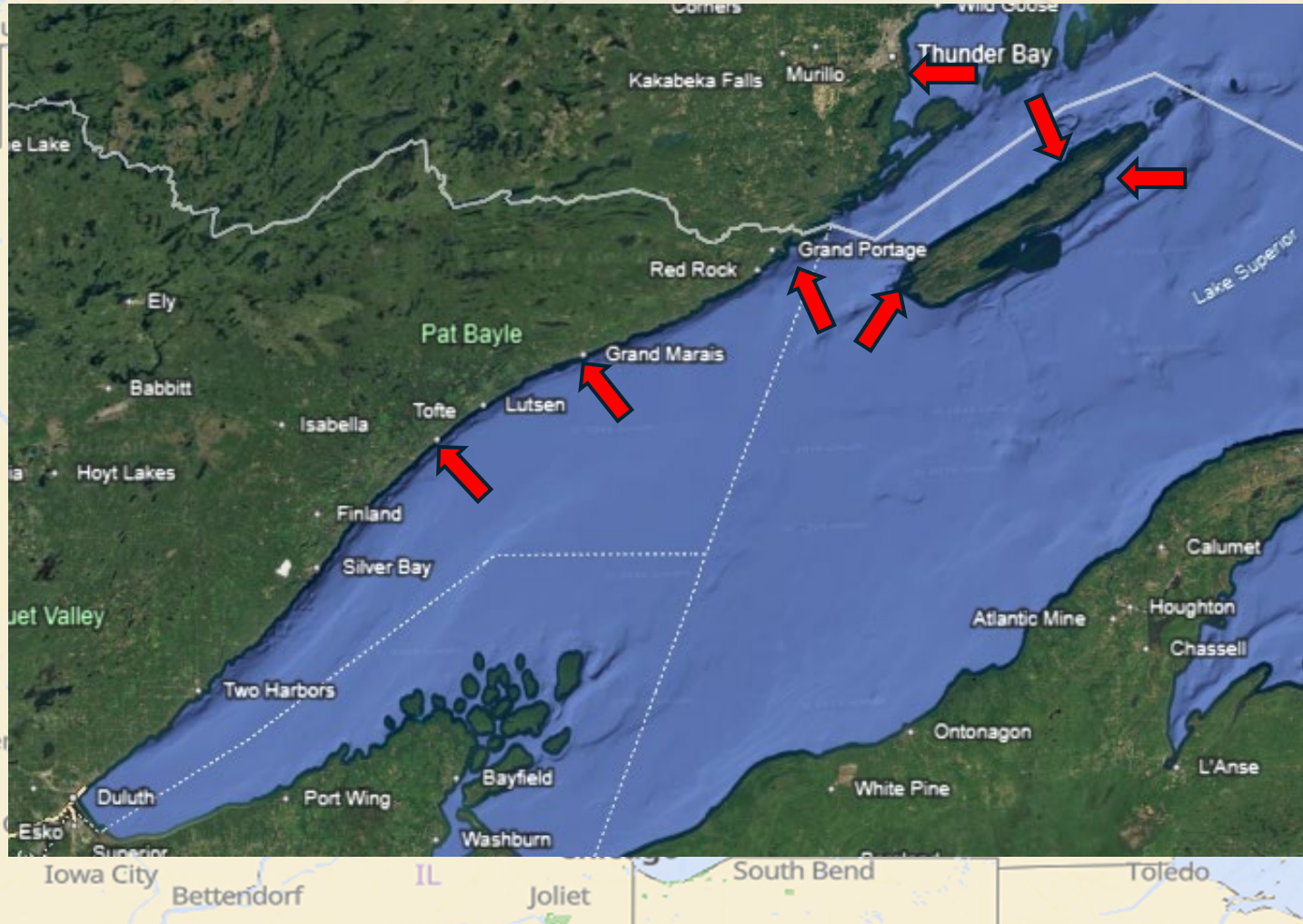
Services: Fuel (G/D), pump-out, 30/50 amp electrical, 50-ton Travelift, restrooms/showers, Laundry, WiFi, marine and gift store, repair services, restaurant. Grocery and liquor store 2 miles away.

Duluth/Superior is a major commercial port/city. With US Customs services, hospitals, international airport and rental cars.



Segment 6: Post Rendezvous: Exploring Thunder Bay and Isle Royale

Rear Commodore Nelson Stone



Thunder Bay and Isle Royale – so many beautiful places to explore. Some of Nelson’s favorites are:

Cruise up the coast of Minnesota:

- Taconite Harbor
- Grand Marais
- Suzie Islands/Wauswaugoning Bay

Then it’s decision time

- Thunder Bay City Marina OR

Explore Isle Royale – 3 favorites are:

- Washington Harbor
- McCargo Cove
- Rock Harbor

Harbor Report Links for Segment 1 (with alternatives): Racine to Mackinac Island

Racine (M-45):	https://www.glcclub.com/m45-racine
Port Washington (M-45):	https://www.glcclub.com/m47-port-washington
Sheboygan (M-48):	https://www.glcclub.com/m48-sheboygan
Manitowoc (M-49):	https://www.glcclub.com/m49-manitowoc
Kewaunee (M-51):	https://www.glcclub.com/m51-kewaunee
Washington Island (M-86):	https://www.glcclub.com/m86-detroit-harbor-wi
Muskegon (M-22):	https://www.glcclub.com/m22-muskegon
Pentwater (M-20):	https://www.glcclub.com/m20-pentwater-michigan
Ludington (M-19):	https://www.glcclub.com/m19-ludington
Frankfort (M-16):	https://www.glcclub.com/m16-frankfort
Northport (M-13):	https://www.glcclub.com/m13-northport
Beaver Island (M-2):	https://www.glcclub.com/m2-st-james-harbor
Mackinac Island (H-77):	https://www.glcclub.com/h77-mackinac-island

Harbor Report Links for Segment 2 (with alternatives): Detroit/Bay City to Mackinac Island

Detroit(D-54):

<https://www.glcclub.com/d54-detroit>

Sarnia (D-3):

<https://www.glcclub.com/d3-sarnia>

Harbor Beach (H-56):

<https://www.glcclub.com/h56-harbor-beach>

Bay City (H-61):

<https://www.glcclub.com/h61-bay-city>

Harrisville (H-64.5):

<https://www.glcclub.com/h64-5-harrisville>

Rogers City (H-73):

<https://www.glcclub.com/h73-rogers-city>

Mackinac Island (H-77):

<https://www.glcclub.com/h77-mackinac-island>



Harbor Report Links for Segment 3 (with alternatives): Mackinac Island to Sault St. Marie

- Mackinac Island (H-77): <https://www.glcclub.com/h77-mackinac-island>
- DeTour (H-83): <https://www.glcclub.com/h83-detour-village>
- Harbor Island (NC-2): <https://www.glcclub.com/nc2-harbor-island>
- St. Mary's River, Lime Island and East Neebish:(NC-01-NC-0.9): <https://www.glcclub.com/nc01-nc09-st-marys-river>
- Sault Ste. Marie and the Soo Locks (S-230): <https://www.glcclub.com/s230-sault-ste-marie>
- Isaak Walton Bay (S-222): <https://www.glcclub.com/s222-isaac-walton-bay>
- Waiska Bay (S-221): <https://www.glcclub.com/s221-waiska-bay>



Harbor Report Links for Segment 4: Sault Ste Marie to Duluth/Superior

Sault St. Marie (S-230):

<https://www.glcclub.com/s230-sault-ste-marie>

Whitefish Point (S-220.6):

<https://www.glcclub.com/s220-6-whitefish-point>

Grand Marais (S-220):

<https://www.glcclub.com/s220-grand-marais>

Munising (S-218):

<https://www.glcclub.com/s218-munising>

Marquette (S-217):

<https://www.glcclub.com/s217-marquette>

Big Bay (S-215):

<https://www.glcclub.com/s215-big-bay>

Keweenaw Waterway (S-199):

<https://www.glcclub.com/s199-keweenaw-waterway>

Houghton-Hancock (S-200):

<https://www.glcclub.com/s200-houghtonhancock>

Ontonagon (S-198):

<https://www.glcclub.com/s198-ontonagon>

Stockton Island (S-191.5):

<https://www.glcclub.com/s191-5-stockton-island>

Apostle Islands (S-191):

<https://www.glcclub.com/s191-apostle-islands>

Bayfield (S-192):

<https://www.glcclub.com/s192-bayfield>

Cornucopia (S-190):

<https://www.glcclub.com/s190-cornucopia>

Duluth/Superior (S-187):

<https://www.glcclub.com/s187-duluth-superior>

Harbor Report Links for Segment 5: Post Rendezvous: Exploring Thunder Bay and Isle Royale

Duluth-Superior (S-187):

<https://www.glcclub.com/s187-duluth-superior>

Taconite Harbor (S-182.8):

<https://www.glcclub.com/s182-8-taconite-harbor>

Grand Marais (S-182):

<https://www.glcclub.com/s182-6-grand-marais>

Suzie Islands (S-182.1):

<https://www.glcclub.com/s182-1-susie-islands>

Wausaugoning Bay (S-182.3):

<https://www.glcclub.com/s182-3-wausaugoning-bay>

Thunder Bay (S-134):

<https://www.glcclub.com/s134-thunder-bay>

Isle Royale Nat'l Park (S-150):

<https://www.glcclub.com/s150-isle-royale-national-park>

Washington Harbor (S-163):

<https://www.glcclub.com/s163-washington-harbor>

McCargoe Cove (S-159):

<https://www.glcclub.com/s159-mccargoe-cove>

Rock (Snug) Harbor (S-180):

<https://www.glcclub.com/s180-rock-snug-harbor>



Next Steps

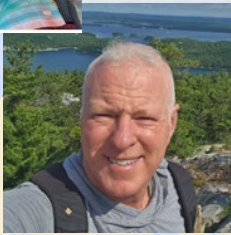
Want to join the flotilla? Contact us!

Flotilla Coordinator: Dee McClure at: waterbeachsail@gmail.com



Segment 1: Racine to Mac Island

Contact Port Captain Mark Wild at: markwild48@gmail.com or



Segment 2: Detroit/Bay City to Mac Island

Contact Commodore Joe McKeown at: mckeown.joe@gmail.com



Segment 3: Mac Island to Sault Ste. Marie and the Soo Locks

Contact: Rear Commodore Rob Hillman at: robhillman@email.com



Segment 4: Lake Superior: Sault Ste. Marie to Duluth/Superior

Segment 5: Post Rendezvous: Isle Royale and Thunder Bay

Contact: Rear Commodore Nelson Stone at: nstone812@gmail.com

