

## GB-28.10 Vanderdasson Bay

06/26/2023 Julie Thorndycraft

### From Vanderdasson Bay to...

[San Souci \(GB-29.1\)](#), 4 miles SW

[Midland \(GB-22\)](#), 46 miles S

### Vanderdasson Bay area quick reference...

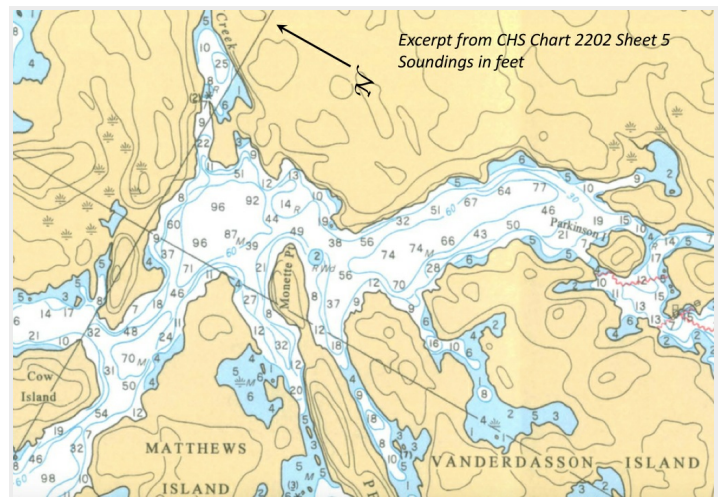
Type of harbor	wilderness anchorage	Dockage	no
Location	<a href="#">45° 11.5' N, 080° 03.68' W</a>	Anchorage	many
Chart	CHS 2202, Sheets 5	Population	none
Port Captain	none		

### Introduction

Vanderdasson is a designated overnight anchorage in The Massasauga. It is not well known and little visited. It extends from the narrows between Matthews Island and the mainland southeast to Parkinson Island.

The open water is quite deep with few hazards that are well charted. There are numerous coves and indentations where a pleasant and private anchorage can be found.

There are no cottages and this area is not a main thoroughfare for cottage boat traffic although some cottagers come to play or fish in the deep open bay; particularly on weekends. There are several designated campsites for canoeists and kayakers paddling The Massasauga.



1) Park sign. Note that Vanderdasson is spelled incorrectly on the sign. 2) Northeast view from Parkinson Island. Photos by David Spencer.

## Approaches

Approach is off the track of the “Northern Entrance” as reported in Moon Island Area (GB-28).

## Entrance

The entrance to Vanderdasson is deep and clear between Matthews Island and Cow Island.

An alternate and less desirable entrance can be found at Parkinson Island if you are approaching Vanderdasson from the Shotgun Bay / Port Rawson Bay area. There is only 4 ft at LWD on the preferred east side of Parkinson Island. Although the chart shows 4 ft, only 3 ft at LWD was observed on the west side of Parkinson Island in 2019.

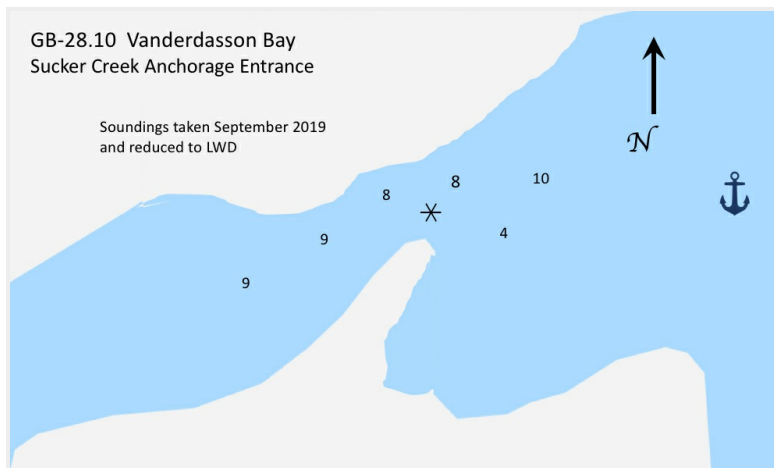
## Anchorage

There are numerous places to anchor around the shoreline of the main body of water depending on forecast weather conditions.

The chart to the right shows where there are campsites and where anchorages are possible.

## Sucker Creek Anchorage

Sucker Creek is an unfortunately named but attractive, protected anchorage that can accommodate several boats. The entrance is partially blocked with a rock.



**1) Soundings for the Sucker Creek Approach. 2) Sucker Creek Entrance, provided by David Spencer.**

The CHS chart suggests that the rock should be left to port when entering but reconnaissance in 2019 showed the safest passage is to leave the rock to starboard.

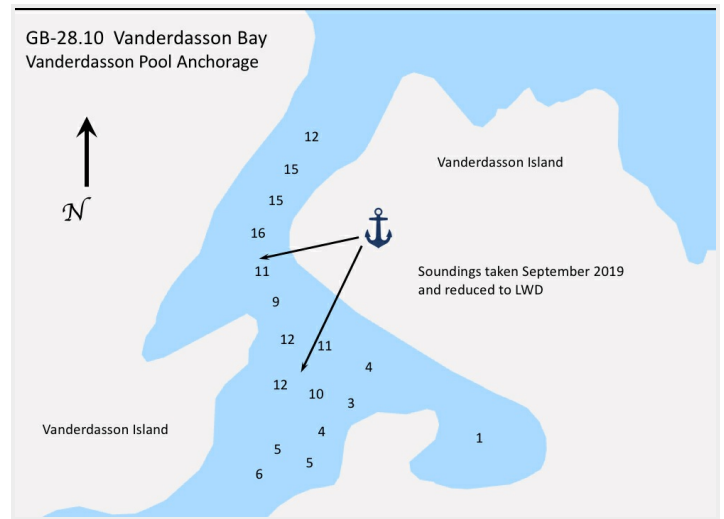
**Note:** The rock is sometimes privately marked with a jug. See picture and sounding sketch. There is a piton in the rock on the slender point for tying to shore.



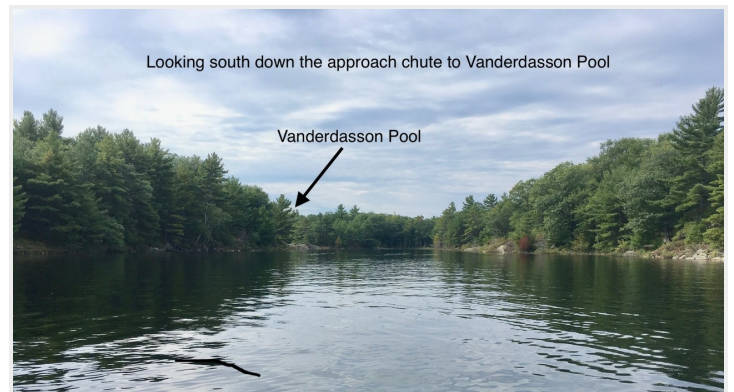
## Vanderdasson Pool

The bay along the northeast shore of Vanderdasson Island provides a fine anchorage. There are no hazards approaching this area.

Anchorage for one boat can be found either in the protected pool or in the approach channel which offers a pleasant view across Vanderdasson Bay.



**Sketch by David Spencer.**



**1) Vanderdasson Pool. 2) Vanderdasson Pool Approach. photos by David Spencer.**

## Other Anchorages

There are two attractive coves just south of the Sucker Creek entrance. They are relatively deep close to shore but may be suitable when an east or northeast wind is forecast.

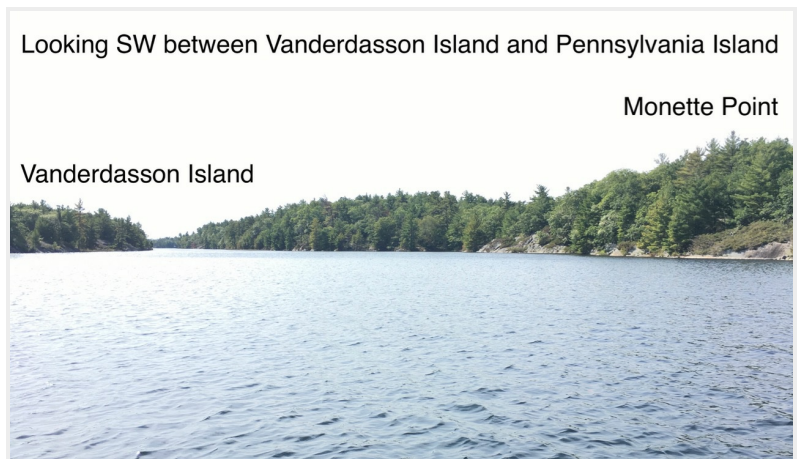
Anchorage can be found on either side of Monette Point in the channels to the southeast and northwest of Pennsylvania Island. Steep cliffs on both sides of Pennsylvania Island make these anchorages attractive, however, a west to southwest wind may funnel up the channels. Many boats can be accommodated here.

While it may seem imprudent to anchor in what appears to be a channel, the channels on either side of Pennsylvania Island are not navigable by cruising boats but they offer interesting areas to explore by dinghy. The anchorage between Matthews Island and Pennsylvania Island is attractive but deep. Expect 35 to 40 ft unless you venture SW toward the shoals where 15 - 20 ft can be found with limited swing room.



**Cove south of Sucker Creek, photo by David Spencer.**





**1) Looking NE between Pennsylvania and Matthews. 2) Looking SW between Vanderdasson and Pennsylvania. Photos by David Spencer.**

### Shore Access

There is a day use area with a picnic table and fire pit as shown on the chart. Easy shore access to take care of pets is plentiful throughout Vanderdasson Bay although there are some locations with steep cliffs making landing difficult. Campfires are only allowed in the day use area. Campsites must not be used by boaters unless they have been reserved in advance with The Massasauga Provincial Park. The Massasauga is a popular backcountry campground and sites are usually fully booked by kayakers and canoeists in the peak summer season.

*Report by David Spencer*

### Enlarged Chart Excerpt For PDF Files

